

# MANIFEST

CREATIVE RESEARCH GALLERY  
AND DRAWING CENTER

## FILLING OUR OWN SHOES...

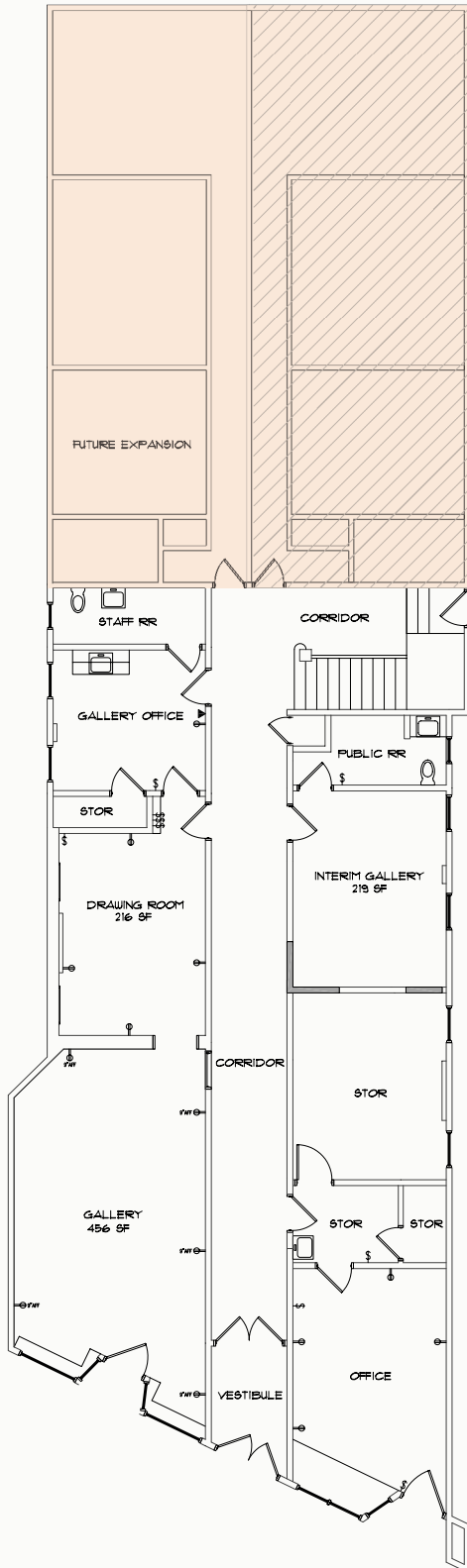
### ONE FOOT AT A TIME

I find myself finally getting you this newsletter with our season 90% complete. Surely you have followed our schedule, and have been informed about Manifest's progress throughout the year by way of our other routine communications, postcards, and in-person conversations. Nevertheless, our newsletters are a chance for us to reflect on recent, current, or upcoming seasonal events, accomplishments, and plans which your support directly affects but which we often do not have the occasion to mention otherwise. This season, our eighth, has had Manifest on the verge of its future in many ways. Mid-year we transitioned key staff, which in a small organization like ours means a drastic impact on daily operations for a while. Yet we made our transitions almost seamlessly, amid many new projects. I often write that this year (whichever year I may be writing in at the time) seems like the one where Manifest grows up. It may be that this is just how a parent always feels. But, being a parent, I know that some years the growth is particularly noticeable. **This is one of those times...**

As you almost certainly know by now, one of the many new advances at Manifest is that we expanded our facility. The gray shaded area in the upper right of the pictured floor plan was added to Manifest's long term lease this past fall. We spent a little money and a lot of effort to do minor renovations over the course of a few months. And early this year the new space enabled the realization of a fourth component to Manifest's roster of programming. Joining our gallery exhibits, studio programs, and publication efforts, is the new **Manifest Artist Residency (MAR)**. We discuss the residency later in this newsletter. But here I wanted to point out how significant this is, both as a physical accomplishment, and as a key expansion of our programming.

Now, as you are also surely aware, Manifest stands to gain the remainder of the floor of our building (the area parallel to the gray shaded area on the diagram) for no additional rent *for the duration of our long term lease* (up to 12 more years!), in exchange for our improvement in the property in the form of proper HVAC equipment. This is our number one task at the moment, and has been an ongoing effort for almost two full years. Many individuals (several of you included) have contributed about 10% of the basic project costs. The **Johnson Foundation** has also recently pledged another 10% in the form of a grant. The **Greater Cincinnati Energy Alliance** has committed 35%. So we are at about 55% funding for the HVAC project which will cover the entire floor of our building (all current and future Manifest spaces) **paving the way for Manifest's next several years on Woodburn Avenue.**

In order to accomplish this project and avoid severe setbacks, we are faced with the immediate need to obtain a loan for the remainder of the funding (\$30,000). The GCEA has offered to provide this loan with Manifest being the first to participate in their new non-profit loan program. This is something we have been counting on. However, the launch of their program has been met with delays over the course of the past year. This has put Manifest in a difficult position because all our plans, formed two years ago, have us in possession of the final portion of the space very near to the time you're reading this, and using it for programming by mid to late fall 2012. Our lease has us taking over the payment of our heating costs in January, which up until now have been covered by our landlord. So not only do we need the high-efficiency HVAC equipment to be installed as soon as possible just to maintain a bearable environment, but also to manage our operating expenses starting in January, and to provide Manifest with additional space capable of increasing programs and revenue to support itself moving forward. (*continued...*)



*"Focus on your mission, and do it very well. This will radiate ambient value to your community and people who encounter your work, providing benefits even outside the scope of your goal."*

## A MANIFEST FOUNDING PRINCIPLE

### SEASON 8

## remaining schedule

#### executive director

Jason Franz

#### assistant director & drawing center director

Tim Parsley

#### office manager

Katie Schoeny

#### gallery manager

Rob Anderson

#### board of directors

April Besl

Jason Franz

Pamela K. Ginsburg

Debbie Heuer

Brigid O'Kane

Carrie Pollick

#### CONTACT

2727 Woodburn Avenue  
East Walnut Hills

[www.manifestgallery.org](http://www.manifestgallery.org)  
513 861 3638 phone

#### gallery hours

Tuesday to Friday 2-7pm  
Saturday 12-5pm

#### July 13 - August 10

*Master Pieces 6*

#### August 17 - September 14

*Nude 4 + Solo exhibit of works of  
printmaking by Sean Caulfield (Alberta, Canada)*

#### August 13 - 17\*

*Figure Drawing with Shane Wolf  
(workshop)*

#### August 18\*

*The Figure Now - Public Drawing Demo  
by Shane Wolf (6-10p.m.)*

#### August 24 - 26\*

*Portrait Drawing with Shane Wolf  
(weekend workshop)*

*\* at the Manifest Drawing Center in Madisonville*

## the manifest artist residency (M.A.R.)

In April we reviewed applications for our first ever Manifest Artist Residency program from 16 states and 2 countries outside the U.S.. Applicants ranged from recent college grads to early/mid career professionals wanting to get a 'Manifest boost.' Once again the value of what Manifest offers surprised us, with so much eagerness on the part of folks to travel and stay in Cincinnati for a year, working alongside our exhibits, meeting our public, and spending time at the Drawing Center. Out of these Tyler Wilkinson was our committee's hands-down top choice for the award. Ty has exhibited at Manifest a few times, and just finished up his BFA degree at Centre College in Danville Kentucky this spring. While the M.A.R. does not

call for artists to be working in a figurative mode, it does ask that artists be eager to partake in the life-drawing sessions at the Drawing Center, which are free to the Resident Artist as a component of the program, if for nothing else than to see how that culture and process can support whatever work they make during their M.A.R. year. Ty's work happens to fall neatly into the figurative and observation-based processes central to our Drawing Center programming. His gracious and inquisitive personality, and undeniable skill, make Ty the perfect first Manifest Artist in Residence. **We hope you'll make a point of visiting Ty in the M.A.R. Space during our opening receptions through next May!**

Below: Ty Wilkinson meets with a guest in Manifest's M.A.R. space, his studio for a year.



## welcome Katie Schoeny!

Earlier this year we said goodbye to Joanna Vance. After two years of growing the position of Office Manager, and helping Manifest through some major accomplishments, Joanna headed west to Seattle, and a full-time position at a non-profit theater. We were stunned when we called for applications and received nearly 80 for the position of part-time Office Manager. Among them was Katie Schoeny, who it became clear was the perfect choice to take over this 'grand central' role at Manifest. Katie received her BFA in painting from Miami University Oxford (1992) and her MA in Art Education from Columbia University (1998). She brings to Manifest her deep roots in the visual arts and philosophy of art education combined with her recent experience in the world of wholesale and retail business operations. Katie and her family live in Madisonville, Manifest's other neighborhood. She started work at Manifest in mid-March, and has made herself right at home.

## ...CONTINUED FROM PAGE 1

At this critical juncture in its history and evolution Manifest is in urgent need of additional financial support, beyond funds contributed towards our annual operations. **We are determined to see to the accomplishment of this project and our final step in physical, and programmatic growth.**

Something we have not broadcast to the wider audience because of the uncertainty of timing, is our initial plan to utilize the impending new space as a **Regional Showcase Gallery** for art made in the three states of **Ohio, Kentucky and Indiana**. As a *neighborhood gallery for the world*, we are always excited by the breadth of our geographical reach. But we also realize the more successful Manifest is at bringing the world to Cincinnati, the less often we feature works from our own backyard. So, it is our goal to make the new space a focus on art from here (and near). We feel that not only will this serve our own nearby artists, but it will provide a compelling opportunity to see the art of our region juxtaposed with art from all around the world in our other exhibits. This may prove, we think, to be compelling creative research for all involved...

With that in mind, **we are in search of key sponsors for this new gallery.** But before we get to that point we must accomplish our HVAC project. If you have not already contributed directly to the HVAC campaign, I hope you will consider doing so now. If you have, and can offer more, we'll thank you doubly. Either way, we are committed to getting this done, and with help it will be done sooner rather than later. We have included a pre-addressed envelope for your use. **If you cannot afford to send funds, then please consider using the envelope to mail us a letter of general support.**

Thank you for being a supporter of our 8th season. We are grateful for all you have already done to help us get this far. I hope we have lived up to your expectations and that the prospect of our plans is as exciting for you as it is for us.

- Jason Franz  
Executive Director and Co-founder



## FOTOFOCUS MANIFEST

October 2012 is *the month of Photography* in Cincinnati, thanks to the FOTOFOCUS biennial celebration which includes more than 50 venues, large and small, coordinated around photo and lens-based activities. Thanks to the ample lead-time provided by the good folks organizing the event, Manifest was able to plan four exciting projects to launch our ninth season, all centered on photography and light-based art. We'll cover the details about each project more in our final season 8 newsletter, but we can't wait to tell you a few details now. First, we are honored that Dennis Kiel, who was curator of photography at the Cincinnati Art Museum for 24 years, and now chief curator at the Light Factory in Charlotte, North Carolina, has agreed to guest curate *DEUS EX MACHINA*, a competitive exhibit of photography revealing the divine, to be presented in Manifest's Main Gallery. Dennis joined us once before on *Trick of the Light*, our first

photo exhibit. Another photo-based project is the *International Photography Annual* (INPHA). The INPHA 1 publication will launch in October as the first in a new series surveying contemporary photography around the world. It joins the INDA and INPA (drawing and painting annu-als) as the third major book project of Manifest Press. The INPHA 1 will include 83 works by 55 artists from 17 states and 10 countries including Argentina, China, England, France, Germany, Ireland, Italy, Poland, Scotland, and the U.S.. The book is at our overseas printer now, and it is absolutely stunning! We believe it is important to note that the book is unsponsored, and unsupported by any direct project grant funding. The world needs to know that the INPHA (and most other Manifest Press books) is funded democratically by working artists around the world, those who perhaps have the greatest stake in our projects' success.

*"Don't confuse the beneficial side effects of your effort with your central mission."*

A MANIFEST FOUNDING PRINCIPLE

OTHER NEW FACES

**Board and Staff**

**executive director**

Jason Franz

**assistant director &  
drawing center director**

Tim Parsley

**office manager**

Katie Schoeny

**gallery manager**

Rob Anderson

**current interns**

Mike Bale (*senior intern*)

Joanne Easton (*senior intern*)

Carrie Grubb

Liz Hardy

Sydney Kreuzmann (*senior intern*)

Nick Mannira

Carolina Perrino

Tanya M. Robinson

Chrissy Rother (*senior intern*)

John Tibbs (*senior intern*)

**board of directors**

April Besl

Jason Franz

Pamela K. Ginsburg

Debbie Heuer

Brigid O'Kane

Carrie Pollick

Earlier this year we welcomed a new member to the Board of Directors. Carrie Pollick was matched with Manifest through the ArtsWave Boardway Bound program. Carrie grew up in Cincinnati and attended the Fisher College of Business at The Ohio State University where she graduated in 2003 with a BS degree in Business Administration. Carrie is a Systems Analyst at Cincinnati Children's Hospital Medical Center.

Rob Anderson is already celebrating a full year at Manifest as our not-so-new-now Gallery Manager. Rob joined the Manifest team in summer of 2011, bringing along his valuable teaching and gallery experience. He holds an MFA from the University of Cincinnati and BFA from Xavier

University. A working artist, Rob exhibits his work locally and nationally. When he's not painting in his studio, or at Manifest, Rob teaches drawing for the Department of Visual Arts at Northern Kentucky University; he has also taught at Miami University of Ohio, the Art Academy of Cincinnati, and the University of Cincinnati. Rob has a long history with Manifest, having been one of our earliest interns, then serving as volunteer Open Figure moderator for Saturday sessions for a while. He continues to be a regular participant in the Drawing Center Open Figure sessions each week. Rob is Manifest's craftsman. His work includes overseeing the coming and going of artwork, assisting with exhibition design decisions, and installing exhibits nine times each season.

INTERNATIONAL PAINTING ANNUAL 2!

Along with the launch of the new Photography Annual, Manifest's other newest book series has its second volume at the printer as well. The *International Painting Annual 2* received 1310 submissions from 452 artists in 45 states and 29 countries. The publication includes 118 works by 72 artists from 23 states and 6 countries including Canada, China, Germany, South Korea, South

Africa, and the United States. Essays by Adam Sullivan and David Dorsey are also included. The 176 page book, in both hard and soft cover versions, will release to the public simultaneously with the INPHA 1 in October. These projects take about a year start to finish, so we have just finished taking submissions for the INPA 3, and are about to start that jury process any day!

SEASON 8

**donors + members (you!)**

\* denotes renewing member from season 7

**MASTERS** (\$750+): Debbie Heuer\*, John Heuer, Harvey C. Hubbell Trust\*, Thomas R. Schiff Foundation. **CONNOISSEURS** (\$300-\$749): Mary Heider\*, Mr. and Mrs. Phillip C. Long\*, Marilyn Z. Ott\*, Richard and Vanessa Wayne\*, McCrystle Wood. **PHILOSOPHERS** (\$150-\$274): Farron C. Allen\*, Ron Bates\*, April Besl\*, Jennifer Drydyk, Thomas Effler, Sally Fennell\*, Chip Finke\*, Suzanne Gagnet Fischer\*, Cathy Giovanetti, Polly Hart\*, Yumiko Irei-Gokce\*, Al Lopez\*, David and Vickye Payton, Carrie Pollick, Chrissy Rother\*, Andy Schaub, Leslie Shiels\*, Murray and Robin Sinclair\*, Gina Stevenson\*. **CRAFTSMEN** (\$75-\$149): William and Kate Baumann, Carolyn Bloomfield, Richard Boydston\*, George and Kathleen Brinkman\*, Matthew J. Davey, John Driesbach, Brett Eberhardt\*, Thomas Ebert, Diane Fishbein\*, Jason Franz\*, Couper Gardiner, Pamela Ginsburg\*, Stewart Goldman, Camilla S. Haneberg\*, Jack Hennen\*, Billy Inabnitt, Kim Flora and Bill Jacobs\*, Carl Kalnow, Todd and Donna Lang, Mary Anne Lee, Scott Lenkowsky\*, Julie Loboyko, Amy Mauck\*, Tim and Flora Parsley, Daniel Pfahl\*, Carol Pfetzing\*, Robert Schefman\*, Steph and Stu Shroyer, Carl and Liz Solway\*, Robert and Carol Vidal, Keith Wilde, Ruth Wise\*, Bob Woodiwiss\*, Boris Zakic\*. **APPRENTICES** (\$25-\$74): Mary S. Becker, Maria Blake\*, Annie Bolling, Karen Bondarchuk\*, Charles Bretz, Sharon Butler, Roger Collins\*, Lynne Ambrosini and Rob Contin\*, Joyce M. Corum\*, Christy Dakin\*, Bradford E. Dale, Jim and Jane Dean\*, Julie and David Doepeke\*, Jean Donaldson, David Dorsey\*, Jane Durrell\*, Dan, Carla, and Laura Fisher\*, Mark and Susan Flaspohler\*, John Fleischman, Alexandra Sophia Franz\*, Fred Franz\*, Gary Gaffney\*, Peter Haberkorn, Reiner Hansen, David Hartz, Janalyn Hubbell\*, Jay Jansen\*, Lin Jiang, Kris Rehling Jones, Rebecca Joy, Annette Kitchen, Vivian B. Kline\*, Carol Lahke, Roy Robinson and Sari Lehtinen\*, Mike, Kathy, and Sara Maloney\*, Murray Monroe, Jr.\*, Brian Moore, Kevin and Tamera Muent\*, Anne Nally\*, Janet Nickum, Daniel R. O'Connor\*, John Robinson\*, Deborah Rockman, Paul Schmitt, Marcia and Paul Shortt\*, Bill Shuster, Paul Sittenfeld\*, Andrew D. Smith\*, Elizabeth Fisher Smith\*, Kristin Spangenberg\*, Jane Stanton\*, Anne Straus, Carol Strebel\*, Sheldon Tapley\*, Randall Tiedman, Judith Titchener\*, Jo Vance\*, Patricia Wilson\*, Dawn S. Wilson\*, Wendi Wilson\*, Melissa A. Wolf-Krummen\*. **DONORS** (under \$25): Sisters of Mercy, Cathy Frank

CONTACT

2727 Woodburn Avenue  
East Walnut Hills

[www.manifestgallery.org](http://www.manifestgallery.org)  
513 861 3638 phone

gallery hours

Tuesday to Friday 2-7pm  
Saturday 12-5pm