

LET'S PLAY A GAME

Can you name a gallery (or museum) *anywhere* which:

- is a 501(c)(3) non-profit that is GROWING its programming, staff, and facilities during the economic downturn. (*hint: Manifest added a second paid staff member during season 5, and increased both staff members' hours for season 6. We also increased our exhibit space and number of exhibits by 40%.*)

and

- produces a full-color high quality catalog documenting every work in every exhibit it presents. (*hint: Manifest does, and has produced 40 of these to date.*)

and

- provides regular weekly hours of free public access, including non-business hours accessibility. (*hint: Manifest provides free access to our exhibits for the public every week, including 13 hours of non-business hours. Every exhibit is open to the public for 100+ hours.*)

and

- offers a museum-like experience that is easy and quick to access, unintimidating, comfortable, small enough to thoroughly take in during a short visit but large enough to present a satisfying visual feast in the same amount of time. (*hint: Manifest usually has parking right outside our door, or within half a short block away - for free, and has three dedicated spaces for exhibiting visual art, but still provides an intimate experience.*)

and

- actively seeks to include students in all aspects of programming and in every exhibit, with a mission of contributing to the professionalism of young visual arts learners. (*hint: Manifest's mission directly addresses students right alongside professionals, and most exhibits include exceptional student work intermixed with very well established professionals.*)

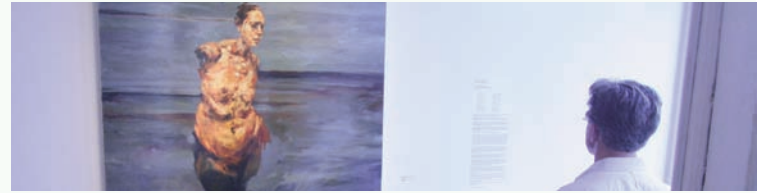
and

- attracts the eager attention of professional and student artists from an international radius. (*hint: Manifest receives submissions from artists in nearly all 50 states and at least 24 different countries for its exhibit and publication projects.*)

and

- exhibits contemporary works by as many as 130 artists each year, selecting them from among thousands by way of an exceedingly rigorous and objective jury process through as many as thirteen different competitive exhibits each year. (*hint: Manifest does this.*)

and



- is more than a gallery, with an equal emphasis on product AND process (gallery and studio). (*hint: Manifest offers professional instruction in studio practices equivalent to the professionalism of its gallery exhibits. As many as 32 different courses or sessions are offered at the Manifest Drawing Center Studio each year.*)

and

- takes an uncompromising stand for quality in the visual arts. (*hint: Manifest's mission is to stand for the quality presentation, experience, and documentation of the visual arts, engaging students, professionals, and the public from around the world through accessible world-class exhibits, studio programs, and publications.*)

and

- is supported by an incredible corps of volunteer student interns who help make nearly every aspect of the business successful, and who benefit from professional arts development offered by their experience. (*hint: Manifest has as many as thirteen different student volunteer interns at a time, representing a total commitment of over 1500 hours of service to the organization.*)

and

- is located in a revitalizing urban neighborhood that needs the creative class and culture that an art gallery attracts, and serves one of the most diverse socio-economic communities in its area. (*hint: Manifest is located in Walnut Hills and East Walnut Hills.*)

and

- seeks to address academia and the public from neutral ground. (*hint: Manifest was founded by students and professors, continues to engage both groups along with the public in ongoing programming, advising, and oversight, and makes Creative Research part of its core identity.*)

and

- continues to be supported by incredibly wise and generous seasonal members who recognize the unique value Manifest brings to Cincinnati and the world. (*hint: Manifest couldn't do it without you!*)

Answer: MANIFEST

WITH OUR WARMEST THANKS FOR SEASON 5

We can never say it enough. Manifest is so grateful for your support of our now past fifth season, and all you've helped us achieve. We are truly hopeful that you will renew your support for the 2009/2010 season if you have not done so already. This past season brought us our largest membership ever, and we're aiming to make this season's list even longer. You'll see the exciting list of upcoming exhibits listed below. We cannot wait to share them with you, and to see you at the gallery often in the coming months. I hope you are proud to have been a supporter of Manifest, and are happy with how the organization has evolved, and how it represents exceptional art to Cincinnati, and Cincinnati to the world.

On behalf of all the artists, and everyone at Manifest, THANK YOU!

- Jason Franz, Executive Director and Co-founder

"Almost everything comes from nothing."

HENRY F. AMIEL

SEASON 5

donors + members

Farron Allen
Linda Augutis
Jessica Bechtel
John Becker Jr.
Maria Blake
Karen Bondarchuk
George & Kathleen Brinkman
Daniel Brown
Sharon Butler
Cole Carothers
Nancy Charak
Philip Cone
Tess Cortes
Joe Curry
Christy Dakin
Jim and Jane Dean
DeSales Crossing Marianist
Community
Julie and David Doepeke
Jane Durrell
Sandy Eichert
Chip Finke
Suzanne Fischer
Diane Fishbein
Mark Flaspohler
Alexandra Sophia Franz
Fred Franz
Jason Franz
Gary Gaffney
Scott Glaser
Drew Gores
Tamara Harkavy and Matt Kotlarczyk
Mary Heider
Jack Hennen
The Harvey C. Hubbell Trust
Yumiko Irei-Gokce
William Jacobs
Stewart Katz
Annette Kitchen
Sol Kjok
Karen Koch
Nancy Kopp
Matthew Litteken
Phillip & Whitney Long
Constance McClure
Kevin and Tamera Muent
Anne Nally
Chloe Dee Noble
Brigid O'Kane
Lou Olenick
Tim Parsley
Carol Pfetzing
Elaine Potter
Alison Probst
Scott Ramming
John Robinson
Roy Robinson
Scott Ryan
Elena Schaub
Andrew Schaub
Leslie Shiels
Marcia Shortt
Paul Schulte and Velda Smiley
W.D. Shuster
Robin & Murray Sinclair

Elizabeth and Paul Sittenfeld
Andrew D. Smith
Jane Stanton
Nicole Staun
Gina Stevenson
StrebelArt
Judith Titchener
Petra Valentova
Marlene Wajert
Maria Walley
Richard & Vanessa Wayne
Dawn S. Wilson
Patricia Wilson
Melissa Wolf-Krummen
Robert & Lauren Woodiwiss
Boris Zakic

SEASON 6

remaining schedule

Nov. 6th Reception

SHAPED +
PAUSE: Contemporary Still Life

Dec. 11th Reception

Paintings by Jennifer Meanley +
BACKYARD (Regional Artists)

Jan. 22nd Reception

BURB: Zones of Living +
Sculpture by Stephen Cartwright

March 5th Reception

Painting Now +
Selections from the 5th International
Drawing Annual

April 16th Reception

6th Annual Rites of Passage +
TEMPO: Works About Time

May 28th Reception

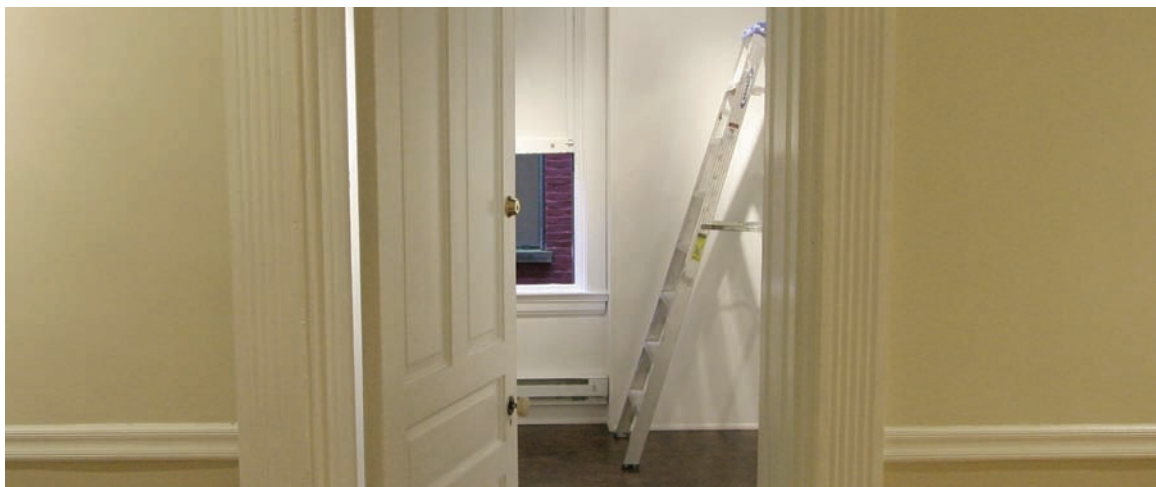
GuideBook: Contemporary Collage
and Assemblage +
6th Annual Magnitude 7

July 9th Reception

2nd Annual NUDE +
Chris Sickels of Red Nose Studio

Aug. 13th Reception

4th Annual Master Pieces



Above:
A view into the virgin Parallel Space prior to installation
(circa Sept. 23, 2009)

executive director

Jason Franz

assistant director

Tim Parsley

admin. assistant

Laura McNeel

board of directors

Christina Dakin

Katherine Dintenfass

Jason Franz

Tamera Lenz Muent

Brigid O'Kane

Elaine Potter

Andy Schaub

CONTACT

2727 Woodburn Avenue
East Walnut Hills

www.manifestgallery.org

513 861 3638 phone

gallery hours

Tuesday to Friday 2–7pm
Saturday 12–5pm