

FLEETING MOMENTS, TAKING OUR CLOTHES OFF

Greetings season 5 donors and members! Clearly time is a fleeting medium. I find myself writing this newsletter with two weeks remaining for the last exhibit of the season. Technically we are already in our new fiscal year as of September 1st. This also means we are moving into a new season of membership, but you'll be hearing all about that soon enough. For now I'd like to tell you more about what has happened this year.

As I mentioned, we're in the midst of our final season 5 exhibit. But this time last year we would have been working diligently on the coming schedule, cleaning the dust from the past year, and taking hard-won vacations. A few months ago the staff took a coffee-break retreat for an afternoon and chatted about our current state of affairs. (Having a staff tends to make staff brainstorming meetings more productive.)

In a nutshell we came to the realization that Manifest no longer needed to take an extended summer break from early August to the end of September. In the past we'd done this because we were all-volunteer, and quite frankly we needed a break. But with the can-do attitude of Tim and Laura now part of the mix we left the meeting determined to fill the empty spot in our summer schedule with another exhibit. After all, it was a perfect fit for another four week presentation.

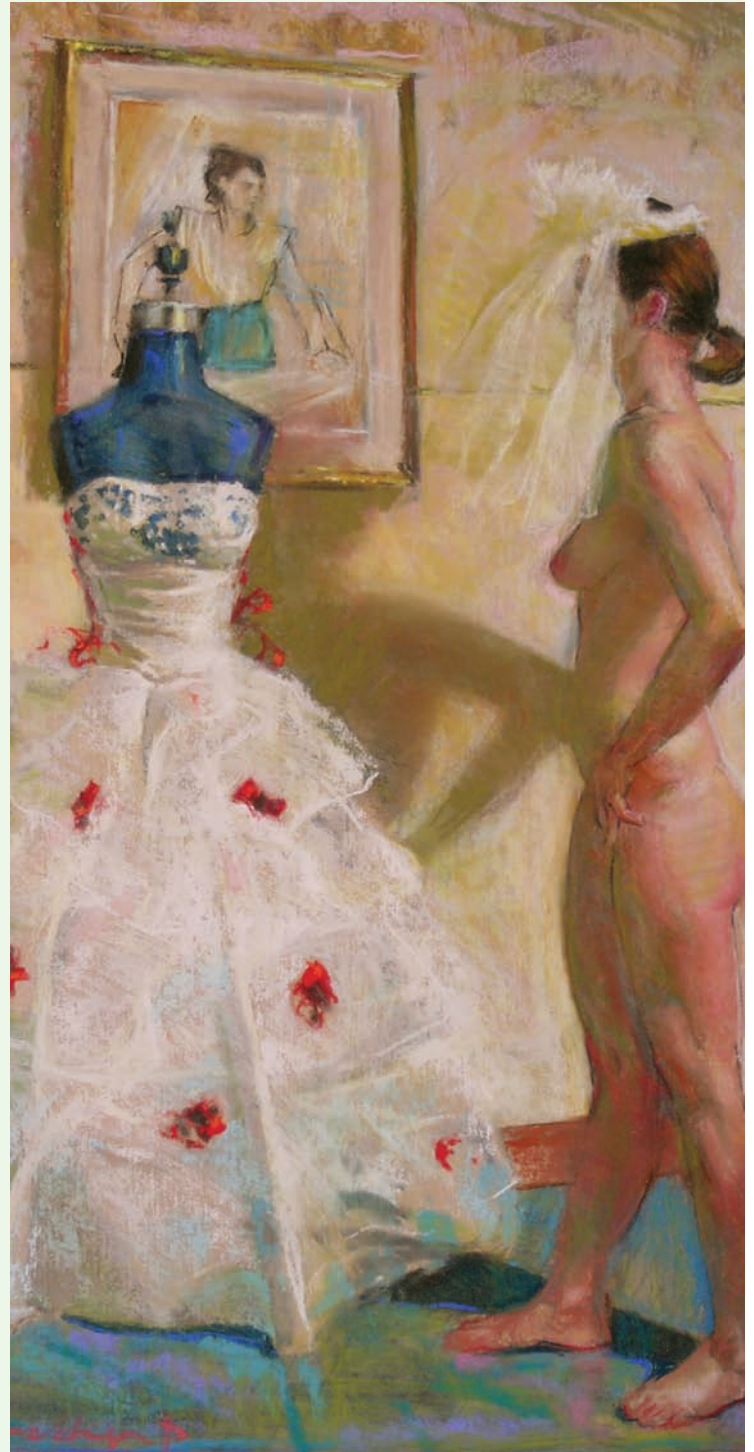
It was in this way that our newest annual exhibit was determined. NUDE was a natural choice. Despite our commitment to life-drawing in the Manifest Drawing Center Studio, and our philosophy of embracing the entire spectrum of types of visual art, we had not yet done a dedicated show exploring the nude. It only made sense to do the show, and that it would be an annual event.

As it turned out, 265 artists from around the world submitted over 600 works for our jury for NUDE, cementing it as an excellent addition to our rotation from year to year. Furthermore the turnout for the reception and our daily attendance has been off the charts, suggesting that this is good for the public.

What is important to note here is that in a time where newspapers are running long articles on the desperate state of the arts (financially) and how this is impacting staffing and programming, Manifest is adding staff, engaging more artists, and adding even more free public presentations to its already robust gallery program. This is something YOU as a supporting member should be very glad to hear, and proud to share with anyone you know. It is thanks to your generosity and belief in our mission that Manifest is able not only to survive, but to thrive in today's world.

Thank you for that!

Jason Franz, Executive Director



Work from NUDE
The Bride, pastel on paper, 2009
by Mark Langeneckert (Columbia, Missouri)

Being naked approaches being revolutionary; going barefoot is mere populism.

JOHN UPGRADE

SEASON 5

donors + members

Farron Allen
Linda Augutis
Jessica Bechtel
John Becker Jr.
Maria Blake
Karen Bondarchuk
George & Kathleen Brinkman
Daniel Brown
Sharon Butler
Cole Carothers
Nancy Charak
Phillip Cone
Tess Cortes
Joe Curry
Christy Dakin
Jim and Jane Dean
DeSales Crossing Marianist
Community
Julie and David Doepeke
Jane Durrell
Sandy Eichert
Chip Finke
Suzanne Fischer
Diane Fishbein
Mark Flaspohler
Alexandra Sophia Franz
Fred Franz
Jason Franz
Gary Gaffney
Scott Glaser
Drew Gores
Tamara Harkavy and Matt Kotlarczyk
Mary Heider
Jack Hennen
The Harvey C. Hubbell Trust
Yumiko Irei-Gokce
William Jacobs
Stewart Katz
Annette Kitchen
Sol Kjøk
Karen Koch
Nancy Kopp
Matthew Litteken
Phillip & Whitney Long
Constance McClure
Kevin and Tamera Munte
Anne Nally
Chloe Dee Noble
Brigid O'Kane
Lou Olenick
Tim Parsley
Carol Pfetzing
Elaine Potter
Alison Probst
Scott Ramming
John Robinson
Roy Robinson
Scott Ryan
Elena Schaub
Andrew Schaub
Leslie Shiels
Marcia Shortt
Paul Schulte and Velda Smiley
W.D. Shuster
Robin & Murray Sinclair

Elizabeth and Paul Sittenfeld
Andrew D. Smith
Jane Stanton
Nicole Staun
Gina Stevenson
StrebelArt
Judith Titchener
Petra Valentova
Marlene Wajert
Maria Walley
Richard & Vanessa Wayne
Dawn S. Wilson
Patricia Wilson
Melissa Wolf-Krummen
Robert & Lauren Woodiwiss
Boris Zakic



Above:
Work from NUDE
Untitled (Tumult)
by Yvonne Petkus (Bowling Green, Kentucky)

MORE GROWTH

Not only have we added staff and exhibits to Manifest this past year, we also added two new board members. Christy Dakin was our second Fine Arts Fund Business on Board match.

Christy has been Interior Designer at Champlin Architecture, Inc. since 2005. She attended the University of Cincinnati's College of DAAP receiving a degree in Interior Design in 2005. She is a NCIDQ certified interior designer and a LEED Accredited Professional. She is a 2009 graduate of the Business on Board program offered by the Fine Arts Fund and is an active member of the International Facilities Management Association.

Christina brings an interest of the visual arts and community redevelopment to Manifest. She also brings an understanding of facility maintenance from an interior designer's perspective, sustainable design, and key business concepts.

Elaine Potter was also recently elected to Manifest's board. Elaine has graduated through three levels of volunteer internship at Manifest since starting in 2007. According to Manifest's by-laws this qualified her for nomination and election to the Board as a Junior Member this year. Elaine graduated from DAAP in 2009 with a degree in Fine Art. As volunteer gallery assistant Elaine coordinates our opening receptions, and works to develop new relationships with sponsors to support the public events, and so much more.

Board development is a continual process. And it takes time and a sense for what the organization needs to make the right connections, and engage new people, keeping the board vital and fresh. Both Christy and Elaine have already brought an incredible amount of energy and commitment to Manifest.

executive director

Jason Franz

assistant director

Tim Parsley

admin. assistant

Laura McNeel

board of directors

Christina Dakin

Katherine Dintenfass

Jason Franz

Tamera Lenz Munte

Brigid O'Kane

Elaine Potter

Andy Schaub

CONTACT

2727 Woodburn Avenue

East Walnut Hills

www.manifestgallery.org

513 861 3638 phone

gallery hours

Tuesday to Friday 2-7pm

Saturday 12-5pm