

## member's newsletter

WINTER 2007 . VOLUME 2 ISSUE 2

# MANIFEST

CREATIVE RESEARCH GALLERY  
AND DRAWING CENTER

## EVOLUTION

On January 7th Manifest turned 2 years old! It's hard to believe that so many days have passed since we opened our doors to the public. This year we celebrated quietly, by taking three enormous evolutionary steps forward in our progress as an organization. On January 13th we presented a lecture/workshop by world-renowned California-based concept designer Scott Robertson, with 137 people, mostly students, attending. This was a terrific success, and moved the needle on the gauge marking what we can do in terms of educational presentations.

With the help of the Fine Arts Fund Business on Board program we finalized the appointment of two new board members, one of whom, Katherine Dintenfass, is introduced below. Andy Schaub, a professional architect, will be introduced in our spring newsletter.

To wrap up our three-part growth spurt I am exceedingly pleased to share that in the two recent calls for entry alone (**It's In Your Head** and **The National Drawing Annual**) we received 700 entries of artwork from nearly 300 artists from 35 states and seven countries including Canada, England, Germany, Israel, Scotland, Russia, and the U.S. The implications of this enthusiastic response are staggering. This many creative people across such a wide geographical area are aggressively competing to exhibit work in Manifest's East Walnut Hills 850 square foot gallery space! And this is only two out of seven total calls for submissions planned for this season. Apparently, our creative culture is magnetic, and as always, we owe so much thanks to you, our members, for continuing to support our efforts and make this all possible.

## INTRODUCING...

Born in Newark, Ohio, Katherine Dintenfass received her B.S. in Psychology at The Ohio State University and her General Management education at Northwestern. Professionally, she has been working brand management and marketing at such companies as Abbott Laboratories, Procter & Gamble, Mentos, and currently Luxottica Retail as Marketing Manager for New Business Development. Having lived in Cincinnati for the past eight years, she recently joined the Fine Arts Fund Business Volunteers Association (BVA) and was matched with Manifest in early summer 2006.

The opportunity to be a steward for the brand and business of Manifest was a way to benefit from Katherine's professional experience to meet the new challenges that will result from the growth of our young organization.



scott robertson lecture at UC (left) and scott robertson autographs his books at Manifest (inset)



## SUMMERFAIR COLLABORATION

For a second year Summerfair invited Manifest to collaborate on their Emerging Artists Exhibition for graduating seniors in fine art at the seven regional college programs. This year Manifest handled the organization of the submission process, as well as juried, curated, and installed the exhibit at the Essex Studios. A team of six jurors anonymously reviewed 161 entries from five of the seven eligible schools, and selected 25 works as being of high quality worthy of exhibit. We are proud that our rigorous selection process was able to help create what Summerfair Director Sharon Strubbe said was an exhibit so stunning it brought tears to her eyes when she first saw it installed. We believe that standing by standards of quality pays cultural dividends in exponential amounts!

*We have no art...  
We do everything as well as possible.*

## BALINESE VILLAGER

### SEASON 3

#### donors + members

Farron Allen	Anneke & Michael Kaminski
Jeff Arnold	J. Louis Karp
Jessica Bechtel	Stewart Katz
Kelly Blom	Elizabeth Kauffman
George & Kathleen Brinkman	Sol Klok
Maureen Bloomfield	Nancy Kopp
Daniel Brown	Anne & Daniel Lovell
Marybeth Carrico	Margaret Lyon
Edward Cole	Amy Mauck
Roger Collins	Constance McClure
Tess Cortes	Kevin Muent
Joseph Curry	Tamara Muent
U. of Dayton, Dept. of Art	Brigid O'Kane
Stephen Dessner	Tom Partridge
Julie & David Doepeke	Carol Pfetzing
Jean Donaldson	Trevor Ponder
Jennifer Drydyk	Jay & Marilyn Richey
Jane Durrell	Jeffrey Salter
Susan Ewing	Rebecca Seeman
Jean Feinberg	Leslie Shiels
Chip Finke	Dr. W.D. Shuster
Alexandra Sophia Franz	Mu & Robin Sinclair
Jason Franz	Elizabeth & Paul Sittenfeld
Gary Gaffney	Liz & Carl Solway
Drew Gores	Robert Spahr
Rob & Cara Hague	Jane Stanton
Cliff Hall	Cynthia A. Stockwell
Camilla Haneberg	Judith Titchener
Jack Hennen	Rae Vuic
Barbara Henshaw	Robert & Lauren Woodiwiss
Helen Hummel	Boris Zakic
Gretchen Durst Jacobs	
Jeffrey Cortland Jones	

### SEASON 3

#### schedule

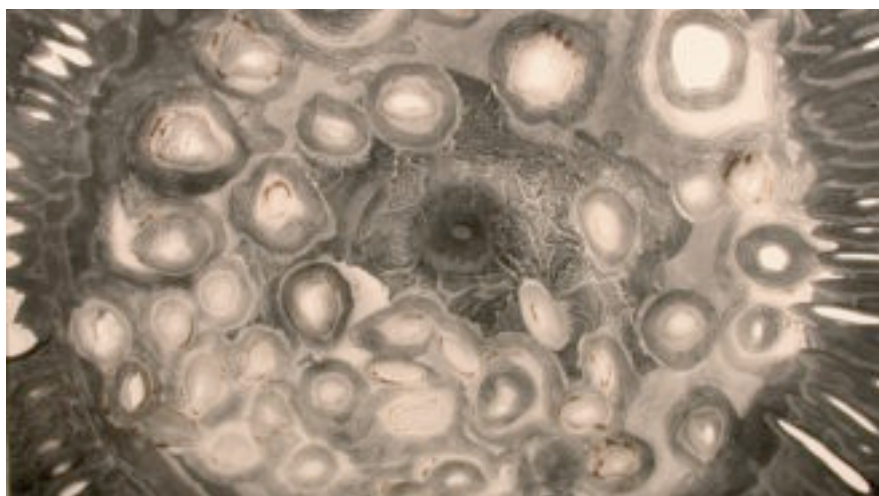
Feb. 2 - March 2  
Drawings by Kathleen Thum and  
Paintings by Emil Robinson

March 16 - April 13  
*It's in your Head* and *Selections from  
The National Drawing Annual 2006*

April 27 - June 1  
*Rites of Passage 2007* (3rd annual)

June 8 - July 6  
*Magnitude 7* (3rd annual)

July 13 - Aug. 10  
*Master Pieces*



#### executive director

Jason Franz

#### board of directors

Katherine Dintenfass  
Jason Franz  
Elizabeth Kauffman  
Brigid O'Kane  
Andy Schaub

#### junior board

Trevor Ponder  
Jeffrey Salter

#### associate directors

Kristin Cullen  
Kevin Muent

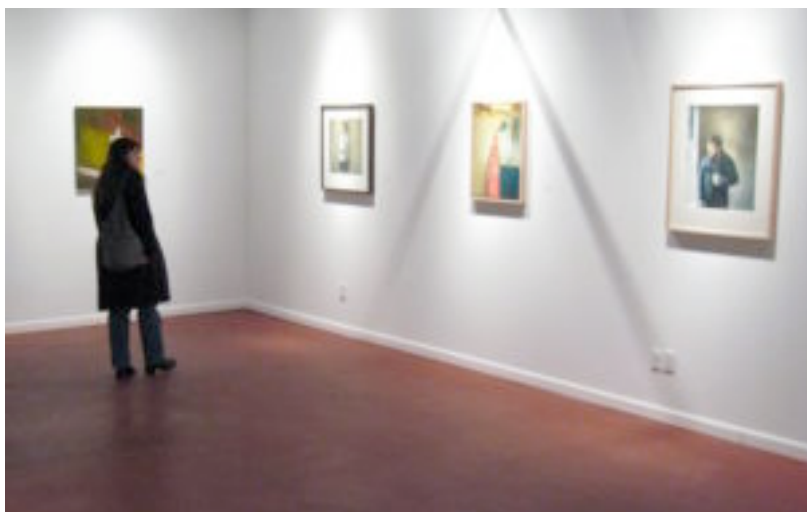
#### CONTACT

2727 Woodburn Avenue  
East Walnut Hills

[www.manifestgallery.org](http://www.manifestgallery.org)  
513 861 3638 phone

#### gallery hours

Tuesday to Friday 2-7pm  
Saturday 12-5pm



summerfair emerging artists exhibit (right)  
works by Marc Leon (NDA 2006) (center), and Tim  
Parsley (*It's In Your Head*) (above).