

“Invention, it must be humbly admitted, does not consist in creating out of void, but out of chaos.”

— Mary Shelley

January 4, 2021

Dear Friends,

This letter is coming as a very belated thank you for supporting Manifest's 15th season (2018-2019 fiscal year). Ordinarily this would have been sent to you a year ago, but we all know what has happened during the interim. Also, one year ago today we were physically moving our entire Drawing Center operation, furniture, artwork, supplies—everything—to a new home in Walnut Hills after almost a decade in Madisonville. Then, before we could settle and schedule an open house to celebrate and reveal the new Drawing Center, COVID-19 hit us *broadside*. Needless to say, this has scrambled much behind the scenes at Manifest, but I am here to tell you we are surviving, adjusting, and moving forward. I feel fortunate to be here, able to write to you about the season before the pandemic, even while looking to the future. *(The drama of our Center relocation and surviving the pandemic will be covered more fully in our forthcoming season 16 report reviewing our 2019-2020 fiscal year.)*

As you may already know, we have revised how we update our members and donors with newsletters, moving towards one final retrospective summary after the close of the season. This one marks the second 'annual report' sent in this way. Included you will find simple lists of our board, staff, interns, instructors, and you, our supporting members. Also included are listings of most of our programs offered across this twelve-month period in our history, some key statistics and facts, and our financial report along with a few charts to help you understand Manifest's fiscal reality and how this relates to our programming. You can also view all of Manifest's IRS 990 Forms on our website under the 'about' tab.

Please know that we welcome any questions you may have. Bottom line, we want you to know how we're doing and that what we do involves a herculean amount of work behind the scenes for our small, mostly part-time staff. We couldn't do it without you.

You, our supporting donors and members, range from artist-participants and exhibitors, to our neighbors down the street, from long-time friends, to overseas colleagues we have never met in person but with whom we have discovered a strong affinity. I can't express how much your practical support in the form of donations large or small mean to us. Simply caring enough to be part of this list, wherever you are, gives us resolve every day.

Manifest provides its programs at an impossible discount. This is for the sake of artists and the general public alike. Whether it be free admission to the gallery across 1,200 hours each year, our unfunded Artist Residency program providing three, no cost, one-year Residencies annually, our award-winning books unmatched in terms of quality and scope assembling the art of the world into one beautiful package, or our rigorous studio program providing expert instructed college-quality classes for very low cost, Manifest squeezes every bit of value out of what it does, its square footage, and talent base, all for a mission that we believe makes the world a better place. It is our investment in society, in our fellow thinkers and makers, and in life.

Our Annual Fund makes up the difference in the cost/value and the earned revenue generated by each program. The Fund is what bridges the gap left over between what we do, and what it really costs. So *thank you* again for putting what you can into supporting Manifest. I hope you have already supported the current season (our 17th), but if you have not, I hope you will do so soon and help us meet our very important funding goal before the season ends. With so much uncertainty outside our control, the Annual Fund really is our lifeline.

With all my best regards,



Jason Franz
Executive Director

S15

ANNUAL REPORT 2018-2019



MISSION

Manifest is much more than a gallery. Our organization is a 501(c)(3) charitable nonprofit founded on Woodburn Avenue in Cincinnati, Ohio in 2004 by professors and students from area universities seeking to make a positive community impact. Manifest continues to be operated by professors, students, and working artists to this day. Our programming is divided into four balanced quadrants: Gallery (exhibitions), Press (publications), Artist Residency (support), and Drawing Center (education). The first three programs are housed on Woodburn Avenue. The Drawing Center Studio, located in the community of Walnut Hills just over a mile West of the gallery, houses the fourth. Manifest's operations are funded by a mix of artist-supported revenue, state funding from the Ohio Arts Council, regional funding from ArtsWave, grants from local and national foundations, a supporting annual membership, and donations from individuals like you. Furthermore, sales of our annual publications help fund Manifest's educational work.

Manifest's mission is to stand for quality in the visual arts, as well as the importance of creative research, meaningful and accessible art-based experiences for the public, deep learning outside academia, and the rigorous documentation of exceptional art for posterity.

The organization seeks to engage students, professionals, and the public from around the world through accessible world-class exhibits, studio programs, and publications centered on the broader visual arts.

Manifest Gallery serves as a venue for the display and experience of insightful, thought provoking art and design, and functions as a hub for creative research and innovation at all levels of artistic endeavor.

Manifest Drawing Center promotes and explores drawing, photography, and related activities as rich and culturally significant art forms through the pursuit of educational hands-on activities.

Manifest Press documents the organization's activities through carefully designed publications and has the goal to make the organization's projects accessible for public availability everywhere, including outside its own geographical radius.

The **Manifest Artist Residency** supports artists in making art and engaging the general public by providing an optimal working space and dynamic environment for meaningful growth.

MANIFEST'S COMMITMENT TO DIVERSITY AND INCLUSION

Centered in two urban Cincinnati neighborhoods while reaching a global base of participants, Manifest exists at an intense crossroads of diversity and culture where it witnesses and acknowledges the need to support individuals and groups who otherwise have little or no access to, or understanding of the importance of visual arts and related study and practice. Our formation was, in part, a reaction to findings that the arts play a catalytic role in the revitalization process of depressed communities and a sustaining role in healthy ones, a fact that continues to hold true within our home bases of Walnut Hills and East Walnut Hills today. Manifest is committed to expanding and evolving programming that incorporates and inspires individuals across race, gender, age, religion, and identity, inviting them to experience and learn from artists from around the world, their peers, and professional mentors, in an open, inclusive, and safe environment.





STAFF

Jason Franz

Executive Director
2004 - Present

Erin Corley

Operations Manager
November 2017 - Present

Katie Baker

Exhibition Coordinator
September 2012 - Present

Adam Mysock

Drawing Center Coordinator
July 2017 - Present

Taryn Zust

Operations Assistant
May 2018 - Present

Adam Bloomfield

Director of Operation,
Bloomfield/Schon Investments

Chris Coy

Vice President, Data and Analytics, Health
Transformation Alliance

Dan Dutro

Real Estate Counsel, Bon Secours
Mercy Health

Michael Gentry

CPA, Tax Partner, MCM CPAs

Pamela Ginsburg

Counsel, Ulmer & Berne LLP

Amelia Lewis

Director of Development, UC Gardner
Neuroscience Institute at University of Cincinnati

Carrie Pollick

Epic Application Analyst, Mercy Health

SEASON 15 BOARD OF DIRECTORS

Debbie Heuer

Founder and President, Talent Springs LLC

Jason Franz

Visual Artist, Art & Design Educator

Richard J. Lajoie, Jr.

Retired Business Executive

Brigid O'Kane

Associate Professor of Design,
University of Cincinnati

Gabe Applegate

Patent Attorney, Thompson Hine LLP

Laura Blackorby

Vice President, Enterprise Risk Governance and
Reporting Manager, Fifth Third Bank

INTERNS

Taylor Hedges

University of Kentucky

Angela Livezey

University of Iowa, Graduate

Maria Marotta

University of Cincinnati

Sherman Parnell

Northern Kentucky University

Tia Tobergte

Northern Kentucky University

OUTSIDE SUPPORT

Tim McMahon

Manifest Press Print Production
and Typesetting
2016 - 2019

Kelia Baker

Manifest Press Project Manager
2018 - 2019

Rachel Zylka

Manifest Press Print Production
and Typesetting
2019

DRAWING CENTER

RESIDENT INSTRUCTORS

Samantha Haring

July 2016 - Present

Michael Wilson

September 2017 - Present

DRAWING CENTER

WORKSHOP INSTRUCTORS

Sharee Allen

Katie Baker

Mike Bale

Ann Burrell

Cole Carothers

Alexandra Franz

Armin Mersmann

Brigid O'Kane

Scott Ramming

Katelyn Wolary

DRAWING CENTER

MODERATORS

Sharee Allen

Mike Bale

Sam Haring

Polly Hart

Andy Houston

Laura Lair

Angela Livezey

Adam Mysock

Dan O'Connor

Scott Ramming

Marilyn Wilson

Michael Wilson

Katelyn Wolary

MANIFEST ARTIST IN RESIDENCE (MAR)

Armin Mersmann

2018 - 2019

Katelyn Wolary

2018 - 2019

Nate Gaefke

2019 - 2020

Ron Prigat

2019 - 2020

MANIFEST SCHOLAR IN RESIDENCE (SIR)

Angela Livezey

2018 - 2019

Mike Bale

2019 - 2020





MANIFEST GALLERY

During Manifest's 15th season, Katie Baker, our veteran Exhibition Coordinator, installed **33 exhibits** over **9 show periods** with **3,615 visitors** attending, all while mentoring **5 intern and co-op students** over the course of the year. The season kicked off with a collaborative exhibition for the 4th FotoFocus Biennial, where all five galleries held works that in some way addressed the Biennial theme, *Archive*.

Manifest welcomed two new Artists in Residence (MAR) in July 2019, Katelyn Wolary (Cincinnati, Ohio) and Armin Mersmann (Midland, Michigan). Their immersion in both their studio practice, in the gallery's building on Woodburn Avenue, and at the Drawing Center in Madisonville, culminated in a final showcase of their work during our seventh exhibition period.

Katie organized three gallery talks, two with Katelyn and Armin as part of their MAR showcase event, and another with regional Kentucky-based artist, Ron Isaacs. Fifty-seven local and regional visitors attended to hear these artists speak about their work and their experience as a working artist today. In addition to coordinating gallery talks, Katie organized a number of studio visits with Katelyn and Armin by arts professionals from around our region.

Manifest's internship program represents an integral part of our daily operations. For each new incoming intern, Katie works with them individually and in small groups to instill a confidence and understanding of best practices in art handling and installation. Under her supervision they learned the subtle art of safely packing and unpacking works, along with proper technique relative to handling and installing artwork. Interns and co-ops learned how to properly light works of art and how to clean them in an archival manner.

Of her role, Katie remarks...

"Notable challenges included sometimes necessary adjustments and alterations to better showcase complicated works. One such occasion was Marina Fridman's 'Overview,' during the Manifest Prize: ONE 9 exhibition. A number of adjustments and manipulations to our existing lighting equipment were needed to create the best environment for the piece, resulting in a visitor experience that I am proud of. I enjoyed the process of installing shows such as 'Utility,' Mihee Nahm's, 'Fragments,' and Ron Isaacs', 'Other Selves,' because of the challenges they presented and the quality and detail these artists instill in their work."

Sept 28 - Oct 26, 2018

ARCHIVES + ARCHIVE [photo] +
Wes Battoclette (photography)
+ Dominic Lippillo (photography) +
Greg Sand (photography)

Nov 9 - Dec 7, 2018

ANIMALIS + PLEIN AIR +
SOIL & DIRT

Dec 14 - Jan 11, 2019

9th annual TAPPED + ONE 9 + NEW
ENGLAND REGIONAL + GULF SOUTH
REGIONAL + GEOMETRIFICATION

Jan 25 - Feb 22, 2019

SIMILITUDE + UTILITY +
SINKS & CHAIRS

March 8 - April 5, 2019

ONE SHOT + OHIO, KENTUCKY,
& INDIANA REGIONAL +
Ron Isaacs (sculpture)
+ Mihee Nahm (painting)

April 19 - May 17, 2019

DRAWN 2019 + PACKAGED

May 31 - June 28, 2019

15th annual RITES OF PASSAGE +
15th annual MAGNITUDE SEVEN
+ MAR SHOWCASE (Armin
Mersmann & Katelyn Wolary)

July 12 - Aug 9, 2019

KINDRED + VOID + 13th
annual MASTER PIECES

Aug 16 - Sept 13, 2019

NUDE 11 + INHABIT + Sara Pedigo
(painting & drawing) + Cody
Vanderkaay (sculpture)

6,914 WORKS SUBMITTED BY
2,664 ARTISTS FROM **50** STATES
AND **36** COUNTRIES

519 WORKS EXHIBITED BY
309 ARTISTS FROM **41** STATES
AND **8** COUNTRIES



DRAWING CENTER STUDIO

During its fifteenth season, Manifest Drawing Center continued to evolve towards operation as a more formal non-traditional visual art school. Season 15 programming focused on building a community of artist-learners capable of engaging a wider variety of instructional levels.

Between September 2018 and August 2019, the administration of programs was primarily steered by the following insights:

- *In Drawing, we have the highest rate of student participation at the introductory level.*
- *In Photography, we have the highest rate of participation at the intermediate/advanced level.*

Of course, the factors leading to these trends must be studied and cataloged continuously, but in the meantime, the following Season 15 programming choices were guided by those two realizations:

For our Drawing (and Painting) area to grow, we need more opportunities for novice artists to gently transition from traditional learning models (being told what they need to know, memorizing it through repetition, and having a problem assigned to illustrate how to use it) to more problem-based learning models (a problem is assigned to the student, they identify what they need to know, and they learn concepts and apply them to solve the problem). This transitional necessity has led to more problem-focused courses, from Season 15's exploratory *The Drawn Subject* and *Drawing Materials* classes for the early learners to an increased number of situation-centered classes (*Through Your Window*, *Playing with Pigment*, *Drawing Movement*, etc.) for more seasoned artists.

Within the Season 15 Photography area, growth has come via an increased presence of local preachers and prophets of the film-based side of the medium. Through our *More Alive By It* series, we've gotten better at sharing the truths and stories of seasoned area photographers with the new/next generation of lens-based artists. Season 16 Photography programming begins with a continuation of this exposure to experience with *Regarding Place*, a partnership with the Cincinnati Art Museum and Indian photographer, Sohrab Hura. By exposing artists with some experience to the beginnings of their heroes, we expect to have more people circling back to photography's roots in film.

Additionally, there has been a more conscious acceptance of digital photography as a contemporary gateway to growth in darkroom participation, so we've maintained those program characteristics which welcome digital shooting while making the darkroom more easily accessible to the digital artists (with newly added registration perks like free darkroom orientation for 8-week students and free open lab access for all students).

In the end, for season 15, we ended up running approximately 56 different programs out of the 59 offered.

UNINSTRUCTED OFFERINGS (2,541 attended)

Open Figure (183 sessions)
Quick Draw (3 sessions)
Drawing Marathon (4 sessions)
Open Photo Lab (258 sessions)

INSTRUCTED COURSES/WORKSHOPS (1,549 attended)

Kings High School/Taft Museum Visit (2)
Imagine Photography Workshop (1)
Private Lessons (school-aged & adult)
Drawing Essentials
Drawing Materials
Drawing as Mindfulness
Myths, Mausoleums, and the Macabre
Through Your Window
The Subtle and the Radiant
The Drawn Subject: Intro to Portrait Drawing
Carbon Copy
Counterfeits, Copies, and Knockoffs
Drawing Movement
Playing with Pigment
Abstracting from Observation
Intro to Black and White Photography
Making Portraits
Photo Play with Toy Cameras
Wet Plate Collodion

SPECIAL WORKSHOPS/EVENTS

More Alive By It
Envision Project III Reception
Drawing Center Open House (4)
Scholar In Residence (SIR) Exhibition

SEASON 15 SCHOLARSHIPS (tuition wavers)

Bridge Scholarship

Ryan Kerr \$500*

Merit Scholarship

Drew Hart \$500
Kate Priebe \$500*
Tim Riede \$500*

**carries into season 16*

OTHER STATISTICS AND TOPICS OF NOTE

Manifest hired approximately 28 different models, for approximately 187 different figure drawing sessions.



5,339 PARTICIPANTS
183 OPEN SESSIONS
78 INSTRUCTED COURSES

Staff

- January 2019: Kelia Baker stepped aside from her role as Manifest Press Project Coordinator. In an effort to keep the timeline on track, Erin Corley (Operations Manager) took on the added responsibilities of the project coordinator position.
- December 2018: Long-time Manifest Press design partner Tim McMahon made the decision to step down from his contract designer role to pursue full time employment with his new agency in Philadelphia. Tim committed to help guide and mentor incoming designer Rachel Zylka, a current University of Cincinnati, School of Design, Architecture, Art and Planning (DAAP) student.

Accomplishments

- Aided by print and design partners, staff completed 5 publications during Season 15. INDA 12, INDA 13, INPHA 6, INPA 8, and the award-winning first Manifest Exhibition Annual (MEAs10) were released to the public.
- Publication sales increased 42% from Season 14 to Season 15, totaling \$13,232 for the year.
- Each massive projects, MEAs12 and MEAs13 are underway and expected to be distributed in 2020.

Programmatic Changes

During its 14th season Manifest made the decision to reconfigure the production model from 3 annual publications per year to 1 annual per year, primarily due to shifts in artist participation and workflow redistribution for internal staff. The INDA, INPA, and INPHA were beginning the first leg of this transition by the end of Season 15, which also meant that programming would experience a temporary gap in funding that has historically been supported by revenue generated by three publications yearly.

We believe that this new production model will increase the value of participation in each new book we release. We are confident that this will also allow each book to potentially be larger in scope and include more artists and artwork, while allowing staff ample time to focus on the MEA series and better promotion of all books to the public. Once complete, this transition will result in Manifest Press's new model releasing two books per year—the large retrospective Manifest Exhibition Annual for the previous season, and either the next INDA (drawing), INPA (painting), or INPHA (photography).



MANIFEST ARTIST IN RESIDENCE (MAR) + SCHOLAR IN RESIDENCE (SIR)

Each year Manifest selects two applicants to fulfill the year-long role of the Artist in Residence (MAR) and one as the Scholar in Residence (SIR). The MAR program was developed to allow artists to focus on their personal, self-directed studio production with the goal of exhibition and career advancement. The SIR program was developed to offer early-career artists the opportunity to pursue research areas, develop teaching skills and studio production, refinement of media skills and art fundamentals, as well as to provide a vibrant supporting peer culture. Both benefit Manifest's community by providing the public exposure to the often unseen working space and practices of artists, serving to eliminate some boundaries to contemporary art making which currently may divide the everyday public from the fine visual arts.

KATELYN WOLARY (MAR)

Cincinnati, Ohio

BFA, Art Academy of Cincinnati, 2017

Katelyn Wolary (b. 1995) is a figurative representational artist from Wilmington, Ohio. She earned her BFA in Illustration from the Art Academy of Cincinnati in 2017, with a minor in Creative Writing. Coinciding with her undergraduate studies, she studied classical painting and drawing methods with local artist Richard Lushek from 2013-2015. In the summer of 2016, Katelyn attended the Illustration Academy workshop in Kansas City, Missouri, which emphasized the power of drawing above all else. Her work has been featured in the December 2018 issue of the Artist's Magazine, and will be included in Manifest's upcoming 9th International Painting Annual publication. She has exhibited works locally and was included twice in the Student Scholarship Exhibit at the Society of Illustrators in New York City.

Katelyn currently lives and works in Cincinnati, Ohio, where she attends and moderates weekly open figure drawing at Manifest Drawing Center, enjoys employment as a sculptor and finishing artist for a fabrication shop, and continues to paint and travel (simultaneously) whenever the opportunity arises.



ARMIN MERSMANN (MAR)

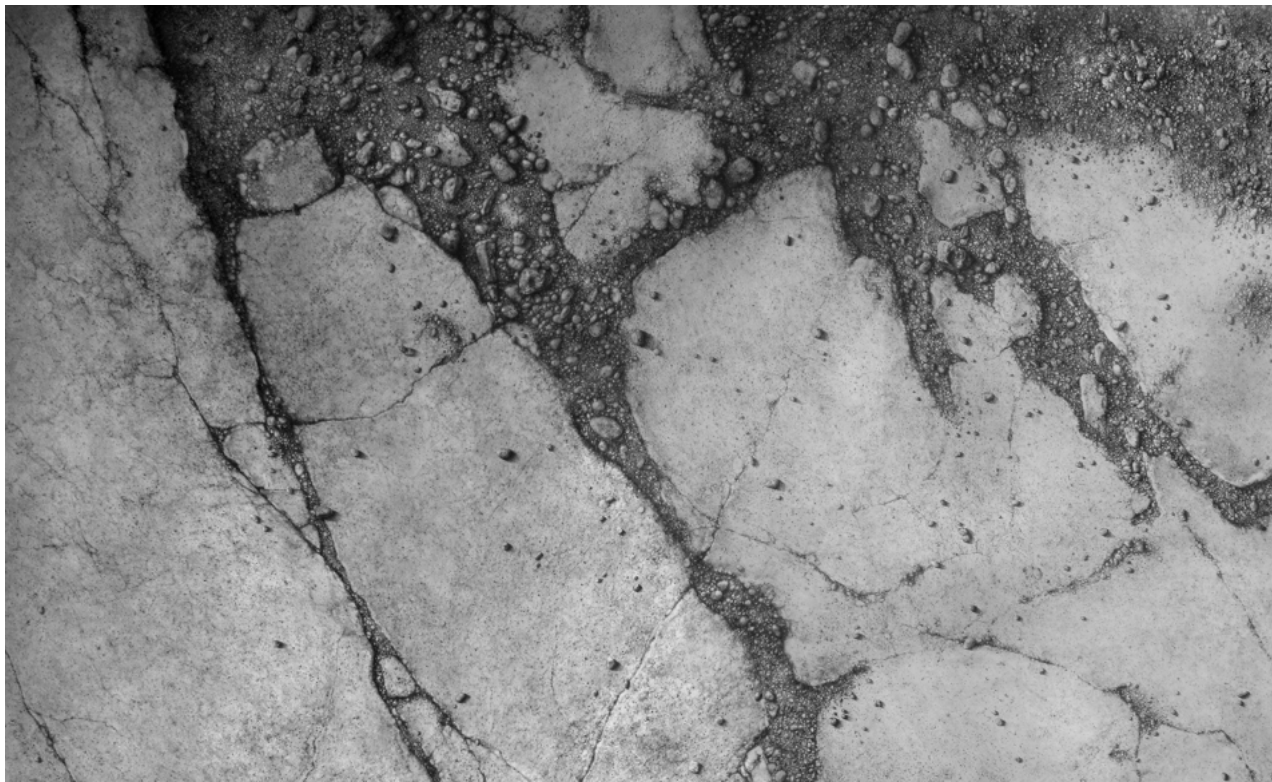
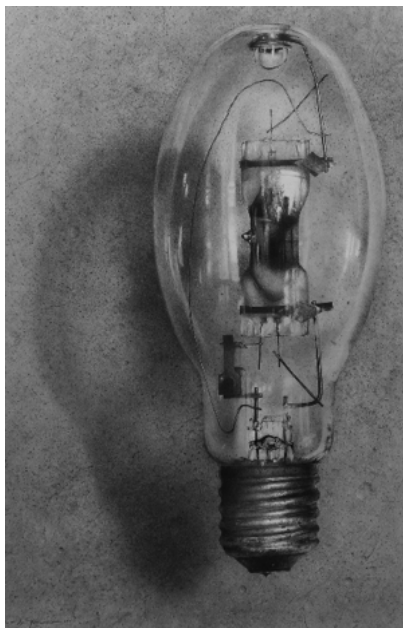
Midland, Michigan

Vermont Studio Center Residency, 1999

Mal Akademie Düsseldorf, Germany - Apprenticeship program, 1981-1983

Delta College University Center, 1979-1981

Armin Mersmann was born in Remscheid, Germany, in 1955. He immigrated to the United States with his parents in 1962. He grew up in an artistic environment and was greatly influenced and tutored by his father, Fritz, a successful oil painter. After six years of college, Mersmann began a successful stint as a portrait artist in Chicago. Although working on commission was financially rewarding, he soon found more interest in fine art, which at times is controversial but more satisfying conceptually. Mersmann has taught drawing, the Creative Process, iPhoneography, and Advanced Critique at the American Academy of Art, Chicago, Illinois; the Colorado Academy of Art, Boulder Colorado; Northwood University, Midland, Michigan; the Midland Center for the Arts, Midland, Michigan; and many workshops within the United States.



ANGELA LIVEZEY (SIR)

Iowa City, Iowa

BFA, University of Iowa, 2018

After completing her undergraduate degree in fine arts at the University of Iowa, Angela actively sought out a community of artists who were serious and inclusive, where she could continue to learn and grow. She discovered Manifest, particularly its Drawing Center, through a past professor and made the decision to move to Cincinnati in 2018. Angela says of her experience, *"I knew about Manifest's amazing reputation and it seemed like the place to be. Manifest has given me such a sense of community. I have found endless support, encouragement, and connections here. I have been able to learn skills I wasn't able to find while I was studying at a University. I am so happy that I came to Manifest. It has been absolutely crucial to me as an artist."*

Since completing her residency, Angela has remained a resident of Cincinnati and continues to attend and teach at the Manifest Drawing Center.

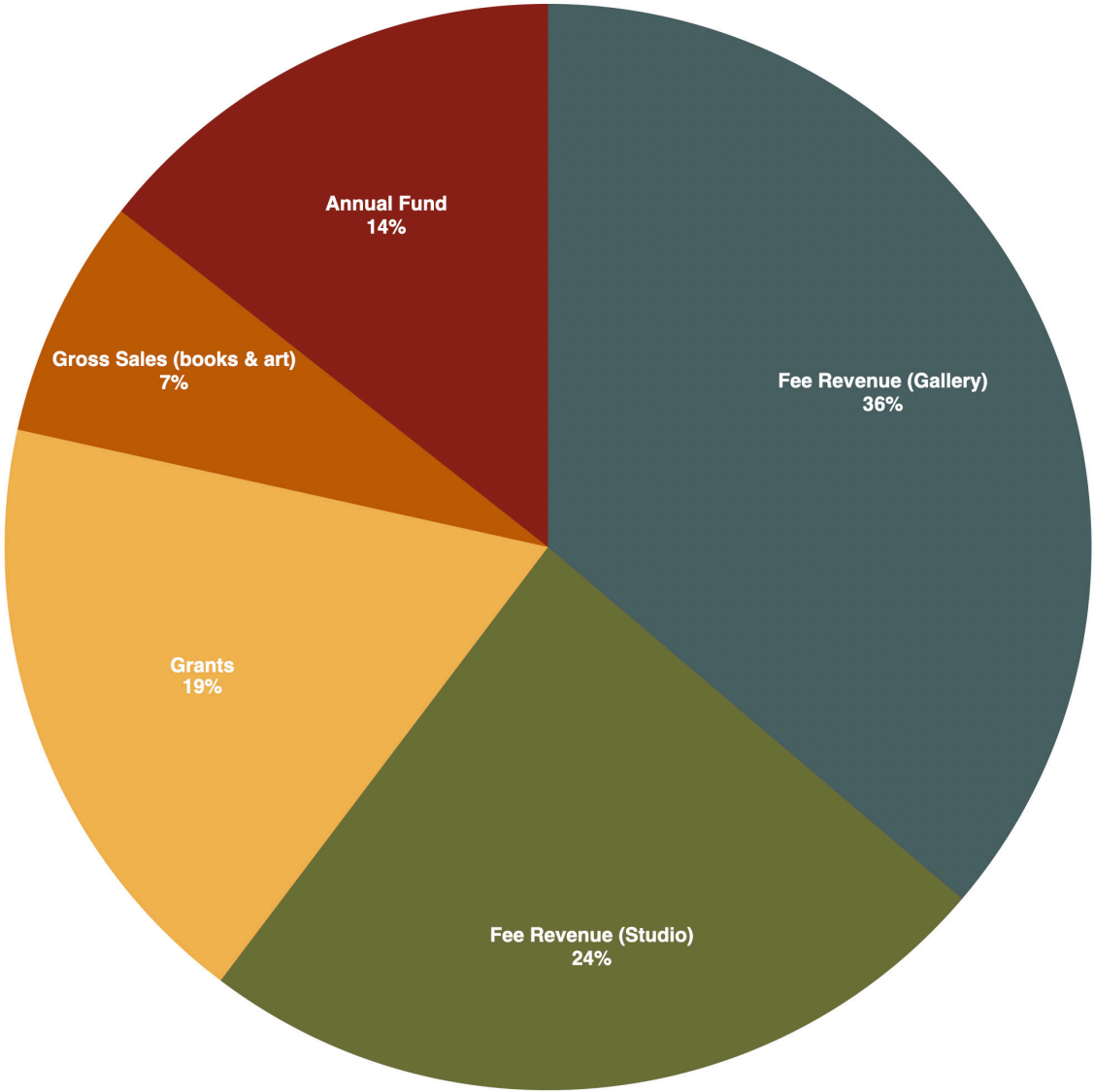


SEASON 15 (2018-19 FISCAL YEAR) FINANCIAL REPORT

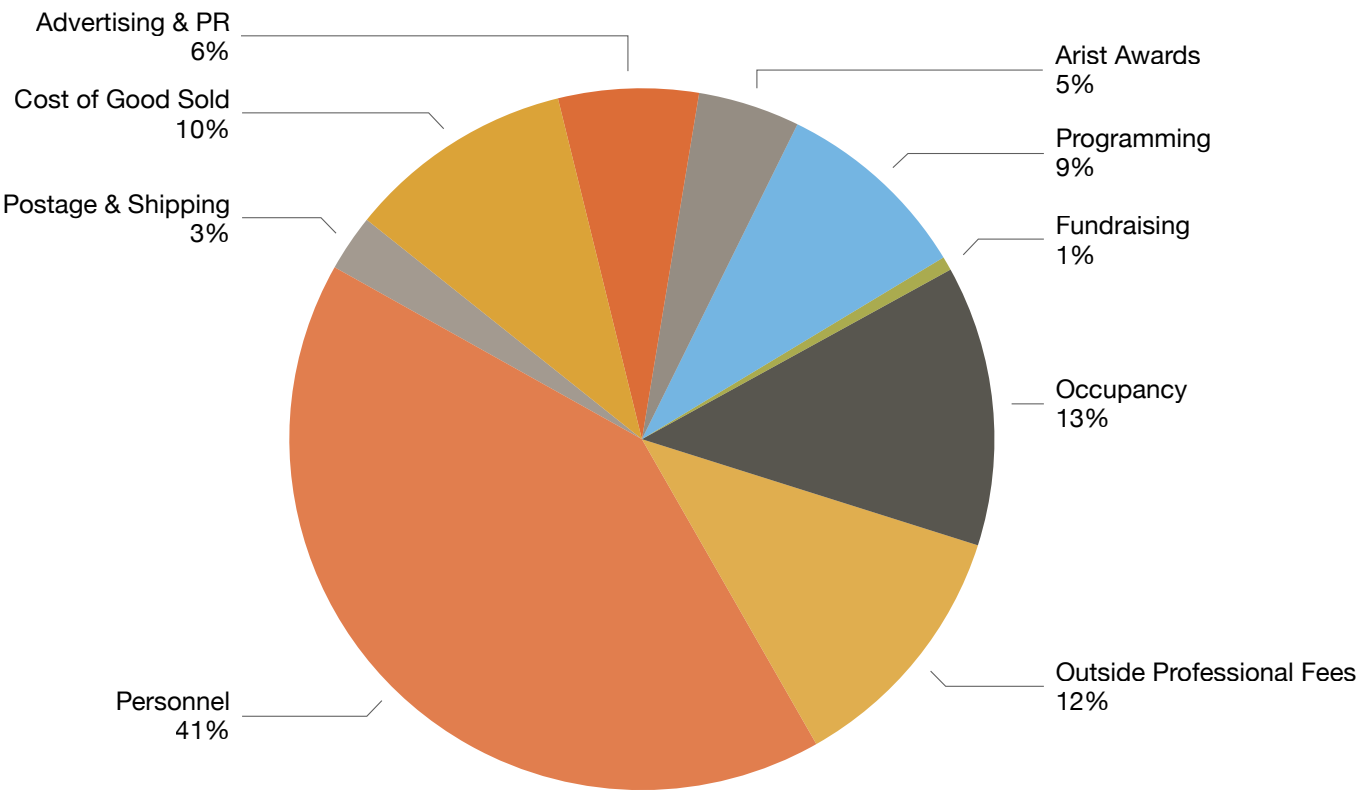
REVENUE	FINAL
Annual Fund	51,802
Fee Revenue (gallery)	130,408
Fee Revenue (studio)	86,709
Grants	65,471
Gross Sales	25,724
Total Income	360,114
<i>Total COG Sold</i>	<i>37,193</i>
Gross Profit	322,921

EXPENSE	FINAL
Advertising & PR	21,588
Artists' Awards	15,700
Programming	30,437
Fundraising	2,138
Occupancy	43,389
Outside Professional Fees	39,861
Personnel	144,974
Postage and Shipping	8,740
Total Expense	306,827
Net Income	16,094

SEASON 15 REVENUE DETAIL



SEASON 15 EXPENSE DETAIL



SEASON 15 MANIFEST MEMBERS AND DONORS (2018-2019)

MONUMENT

(\$5000+)

Debbie & John Heuer*
Phillip C Long*

SPONSOR

(\$1500+)

Carolyn & Steve Bloomfield*
Harvey C Hubbell Trust*
William Olsen*
Kenneth Oswald*

MASTER

(\$750-\$1499)

Cecelia Chewning*
Chris Coy*
Mary Heider*
Ron & Judith Isaacs*
M. Whitney R. Long
Perin Mahler

CONNOISSEUR

(\$500-\$749)

Laura Blackorby
Jennifer Drydyk*
Dan Dutro*
Dick Lajoie*
Jens G Rosenkrantz Jr*
Nancy H Simmons & Tim Ruttle

HISTORIAN

(\$275-\$499)

Valerie Allen*
Gabe Applegate*
Paul Baron*
Jerry Bellas*
Adam Bloomfield*
Erin Donohoe*
Missy & Brian Fox*
Pam Ginsburg*
Belinda Kindle
Amelia Lewis
Daniel Pfahl*
Carrie Pollick*
George Warrington*
Joseph Winhusen*

PHILOSOPHER

(\$150-\$274)

Farron Allen*
Kate & Bill Baumann*
Joomi Chung*
Maria DiMauro*
David & Nancy Dorsey*
Suzanne Gagnet Fischer*
Paul Gaitan*
Mike Gentry*
Drew Gores*
L. Brian Huehls*
Kathy Holland*
Injoo Kim
Carole Kunstadt*
Benjamin Kutay
Francis & Anna Maria Mancini*
Armin Mersmann*
Brent Oglesbee
Brigid O'Kane*

Carol Pfetzing*
Kathy Salchow*
Marcia & Paul Shortt*
Gina Stevenson*
Judy Takács*
Amy West*
Amy, Taryn & Alan Zust

CRAFTSMAN

(\$90-\$149)

Komla Adjaka
Andrew Arkell
Ella Barnes
Kitty & David Michael Beck*
Mariana Belvedere
Charles Berger
Richard Boydston*
Sharon Butler
Carla Chifos
Lee Crooks
Joseph Dagenbach & Andrea Lukin*
Rose DeSloover*
Jean & Rick Donaldson*
Zachary Durban
Chip Finke*
John Fleischman*
Fred Franz*†
Jason Franz*
Jenny French
Tom Fullen*
Cheryle Gannaway
Daniel Good*
Margaret Hardebeck*
Lisa & Gene Haring*
Renee Harris
Hiroshi Hayakawa*
Jeffrey Heyne
Jean Hess Keller
CiCi Lee
Mary Anne Lee
Maggie Leon*
Bob & Diane Little*
Leslie Massey*
Anita & Henry Metzner*
Murray Monroe, Jr.*
Ann Penny*
Megan Richards
Lynn Ryan
John Sabraw
Kathleen Schroeder
Robin & Murray Sinclair
Elizabeth Tilton
Ivan Villalba
Jonathan Ware
Carole Winters*
Ruth E Wise
Rebecca Seeman & David Wood*

ARTISAN

(\$50-\$89)

Greg C Albert
Dene Alden*
Carl Allen
Lynne Ambrosini*
Janiene Baker
Christy Backley
Jessica Bechtel
Tamie Beldue*
Michael Bennett

Robert Bloom
BJ Bondy
Melinda Borysevicz*
Jonathan Calderas
Neil Callander
Douglas Carlson
Tracey Chaykin
Erin & Chris Corley*
Mary Beth Coulson
Madeleine DiMinno
Laurence Deprez-Zenezini*
Susan Ewing
Hillary Feldmann-Tempini
Alexandra Franz*
Thomas Fullen*
Gary Gaffney
Kathleen Ganim
Mary Gilbert
Julie Harwood
John Homer
Christine Johnson*
Janice C Kagermeier
Caitlin Kelly
Judith King
Annette Kitchen*
Mary Kay & Louis Kroner
Brenda LeMaster*
Travis Little*
Dr & Mrs Edward Loftspring
Wendy & Greg Long
Kyle Mace
Renee Martin*
Kevin & Tamera Muenta*
Kimberly Mullarkey*
Marilyn Ott*
David Plageman
Kris Rehling
Ken Reis
John Robinson*
Aaron Rohn
Robert Schefman*
Mimi Sheiner
Betsy and Paul Sittenfeld*
Christine Shea
John Spence
Janet Speier
Allen Strous
Julio Suarez
Kenneth Rothe
Duat Vu*
Mary Wagner*
Roy Willman & Mary Wahrer
Hayward Wilkison
Zelda Zinn

APPRENTICE

(\$25-\$49)

Trish Ansert
Michael Banning
Steven Bastin
James Billiter Studio
Mieke Blees
Maria Blake*
Kathleen Bohlen
Susan Bryant*
Judi Cettel*
Daniel Dallmann*
Gary Dangel
Roxanne Darling

Christine Di Staola*
Adrienne Dixon*
Julie & David Doepeke
Michael Epner
Kim Flora*
Bruce Garrity
Oscar Gillespie*
Joanne Glaser
Stella Grabowski*
Ray Hassard*
Ashley B Holmes
Elaine Kurie
Daniel Maidman
Sara Pedigo*
Elizabeth Reed
Shelly Riemer
Charles & Samantha Hyde
Ilaria Lais*
Echo Lew
Frank Mercado*
Brian Moore
Rosalie Rosenthal
Michelle Sanchez
David Schloss
Sarah Sherman*
David Sokal
Teresa Stanley
Jordan Trovillion

DONORS

(under \$25)

Sharon Alliccotti
Barry Andersen*
Sara Blakeway
Cheryl Brock
Garrett Cobarr
Lindsay Cobarr
Katherine Colborn
Aaron Collier
Gregory Corrigan*
Gerry Dotto
Kurt Dyrhaug
Sharon Edwards
Brittany Gilbert
Bonita Goldberg
Inguna Gremzde
Larry Griggs
Rebecca Joy
Cindy Kopenhafer*
Christine Kuhn
Judith Larsen
Oliver Meinerding
Roy Nierenberg
Lauren E. Novak
Mary Lou J Riley
Kimberly Rodey
Laura Smith
Michael Strahan
Jan Thatcher
Biff Aurelia Vigil
Julie Weeden
Thomas Whitworth
Joseph Wiley
Tyrone Williams
Ethan Wooldridge

* Renewing member
from season 14
† In memory of



Thank you again for your support of this 15th season of Manifest. Please consider supporting the current season's Annual Fund by visiting: www.manifestgallery.org/support.