

# FOR IMMEDIATE RELEASE

## Exhibit of Small Works Draws National Participation

### Magnitude SEVEN

**MANIFEST CREATIVE RESEARCH GALLERY  
and DRAWING CENTER**

**June 3 – July 1, 2005**

**OPENING RECEPTION: Friday, June 3, 6-10 p.m.** (refreshments will be served)

**GALLERY HOURS: Tuesday through Friday 2 – 7:00 p.m., Sat. 12 – 5 p.m.** (during exhibit run)

**LOCATION: 2727 Woodburn Avenue, East Walnut Hills, Cincinnati, Ohio 45206**

(Just south of Madison Rd. at DeSales Corner. Map is available at [www.manifestgallery.org/map](http://www.manifestgallery.org/map))

**PARKING: On street and parking across the street in DeSales Business Lot**

**CONTACT: Jason Franz, exhibit Curator and Manifest Co-Director at 513-290-2574,  
[info@manifestgallery.org](mailto:info@manifestgallery.org)**

**GALLERY PHONE: 513-861-3638**

**FOR MORE INFO: <http://www.manifestgallery.org>**

**FULL COLOR EXHIBIT CATALOG AVAILABLE: <http://www.manifestgallery.org/manifestpress>**

Manifest's national call for small works (no larger than seven inches) revealed a level of enthusiasm for exhibiting the diminutive creations that far surpassed our expectations. In the end, seventy-two artists from twelve states coast-to-coast submitted a total of 183 works for consideration. Manifest's jury committee of five people was genuinely delighted at the challenge they faced in selecting the best works from the lot.

In the end, twenty-five artists from eight states (from California to New York) had a total of thirty-two works selected for exhibit. Of these, ten are students enrolled in academic programs of study. The remaining fifteen are professionals. The fact that forty percent of the exhibitors are students (and that the selection was by blind jury) is a tribute to the enthusiasm and motivation of these active learners. It is also a credit to their programs of study, as well as their instructors, for providing a supportive environment for such adventure. We are pleased that Manifest has inspired students to exhibit alongside professionals. We are especially delighted that in this exhibit it may be difficult, if not impossible, to tell which is which.

**What you'll see:** 32 works no larger than seven inches, representing a diverse range of media and genres, including slip cast ceramic, oil on panel, sculptural assemblage, photography, mixed media collage, gouache on paper, printmaking, watercolor, and quilting – in a range from abstraction to academic realism

## **The Magnitude SEVEN Artists:**

### **Ohio:**

**Amy Bogard**, (Cincinnati), **Frank Herrmann**, (Cincinnati), **Jenny Hershey**, (Cincinnati), **Kim Rae Taylor**, (Cincinnati), **RC Wonderly**, (Pioneer), **Elizabeth Otten**, (Cincinnati), **Jennifer Riser**, (Cincinnati), **Kristen Robinson**, (Loveland), **Alex Roulette**, (Centerburg), **Merlene Schain**, (Cincinnati), **Dorothea Kennedy**, (Cincinnati), **Amy Mauck**, (Dayton), **Matthew Miller-Novak**, (Fairfield), **Colleen McCubbin Stepanic**, (Bowling Green)

### **Kentucky:**

**Matthew Albritton**, (Dayton), **Jeff Leake**, (Bowling Green), **Joshua Rectenwald**, (Union), **Julie Loboyko**, (Georgetown)

### **Indiana:**

**Susan Clusener**, (Bloomington,), **Patrick Manning**, (Indianapolis)

### **Pennsylvania:**

**Susan Marie Brundage**, (Mifflinburg)

### **Illinois:**

**Shane Harris**, (Champaign)

### **Georgia:**

**Jennifer Jenkins**, (Savannah)

### **New York:**

**Susan Kirby**, (Middle Village)

### **California:**

**Priscilla Otani**, (San Francisco)



Matthew Albritton, (Dayton, Kentucky), *Elgin Marbles 1*, photography, inkjet print, 4" x 4", 2004



Susan Marie Brundage, (Mifflinburg, Pennsylvania), *The Legend of Voodoo Dolly*, gouache on paper, 6" x 4", 2005



Susan Clusener, (Bloomington, Indiana), *Prickly Pod #7*, ceramic, pins, wood, 4" x 4" x 2.5", 2005



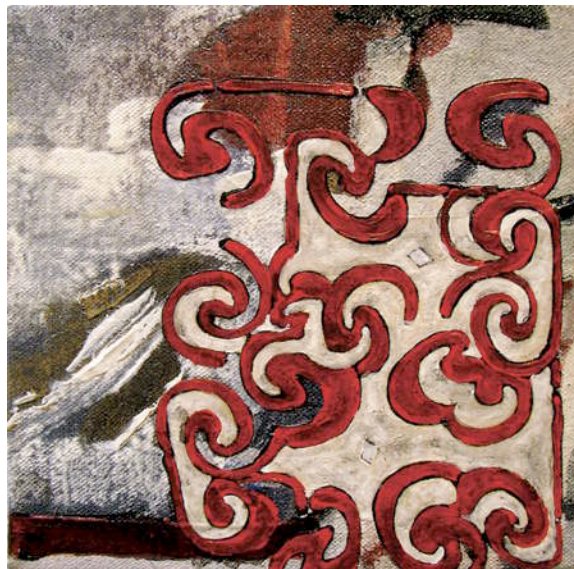
Shane Harris, (Champaign, Illinois), *Shiver Me*, slip cast, glaze, plastic, hair, 4" x 5" x 4", 2005



Alex Roulette, (Centerburg, Ohio),  
*Self Portrait*, oil on panel, 7" x 5", 2005



Susan Kirby, (Middle Village, New York), *Magnitude of Camouflage*, acrylic, plastic, epoxy on wood, 7" x 7" x 2.5", 2005



Frank Herrmann, (Cincinnati, Ohio)  
*Asmat Motif Structure*, acrylic and paper on canvas, 5.63" x 5.75", 2003

For more information send e-mail to: [info@manifestgallery.org](mailto:info@manifestgallery.org)

#### Mission Statement:

Manifest's goal as a non-profit organization is to serve as a venue for the display and experience of insightful, thought provoking art and design, as well as to function as a hub for creative research and innovation at all levels of artistic endeavor. Manifest's location in the urban neighborhood of East Walnut Hills was chosen to take advantage of the community's own long range plan (06 Vision 2010) to guide the revitalization of the area, in part, by incorporating the arts. Manifest is committed to high academic standards, and seeks to engage the community at that level.