

volume eight

empirical *experimental*

MANIFEST
CREATIVE RESEARCH GALLERY
AND DRAWING CENTER

volume eight

empirical

experimental

MANIFEST

cover details
coffee & milk 0206 and 0047 by mary magasamen and stephan hillebrand
passing by mary robinson

manifest volume eight

©2005 manifest press

all rights reserved. no part of this publication may be reproduced in any way without written permission from the publisher. all rights in each work of art reproduced herein are retained by the artist.

manifest

creative research gallery and drawing center

2727 woodburn avenue

cincinnati, ohio 45206

513 861 3638

www.manifestgallery.org

first printing december 2005

edition of 35

designed by kristincullendesign

printed by printpelican

riviera beach, florida

Fine Arts Fund



support provided by a grant from fine arts fund
printing funded by a grant from summerfair cincinnati
sponsorship by tri-state visual products, inc.

december 16 *through* january 13

volume eight

empirical / *experimental*

MANIFEST

a national juried exhibition
curated by *elizabeth kauffman*

em-pir-i-cal adj

relying on or derived from observation.

ex-per-i-men-tal adj

of the nature of an experiment;
constituting or undergoing a test;
founded on experience.

the following artists have based their work in empiricism and experimentation. these terms are more commonly associated with science rather than with art, and these two disciplines are often thought of as opposites. however, if narrow-minded subject categories are removed it is possible to see science and art, these seemingly different modes of thinking and working, as intimately entwined. the artworks presented here were all based on some form of empiricism, either observation of the material world, or observation of the internal world. and the artists took this empirical knowledge and used it to ask a question and create an experiment. some of these artworks are more obviously experimental than others, but all of the works are the findings or results from each artist's process of empiricism and experimentation.

each piece in this exhibit is unquestionably a work of art, however if science is knowledge based on empiricism and experimentation they are scientific findings as well.

peter chamberlain
covington, kentucky

samantha dirosa
pullman, washington

karen gergely
cincinnati, ohio

hojin kwak
palisades park, new jersey

katrina kaiser
interlachen, michigan

jeannette palsa
hudson, ohio

mary robinson
columbia, south carolina

gregory witt
bloomington, indiana

aaron brown
emporia, kansas

mary magsamen and stephan hillerbrand
bowling green, ohio

colleen choquette-raphael
eugene, oregon

nicole lenzi
baltimore, maryland

peter chamberlain
oro ko #3



4" x 3" x 3"

3d printed prototype

2005

samantha dirosa
containing lightness



3" x 1"

silver bubble wand, wax tealight candle, insect

2004

karen gergely
untitled from the journey series

60" x 49" x 14"
mixed media assemblage

2005



hojin kwak
oyster and wind



30" x 22"
mixed media on paper

2005



jeannette palsa
species collodius gasmaskus

16" x 20" framed
ambrotype

2004

essence of self

16" x 20" framed
ambrotype

2005





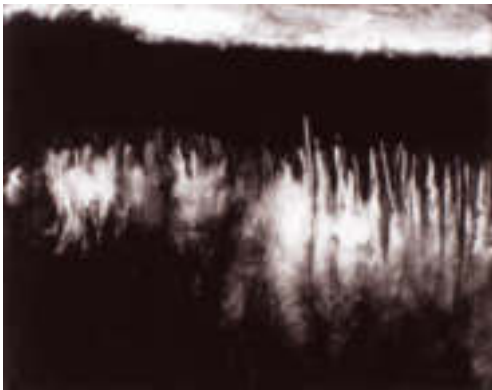
Katrina Kieser
seedpod

72" x 72"

silver gelatin prints and nails

2005

mary robinson
passing



12" x 14"
monotype

2003

gregory witt
puddle



40" x 55" x 36"
mixed media

2005



aaron brown
museology 7

21" x 47"
oil on panel

2004



mary magsamen and stephan hillerbrand
coffee & milk 0206

18" x 24"
digital inkjet print

2005

coffee & milk 0047



18" x 24"
digital inkjet print

2005

colleen choquette-raphael
the flower eaters #12



12" x 12"

found photographs, human neuropathology slides, glass, painted wood

2004

nicole lenzi
gestures 13 months



120" x 108" x 60"

wire, tubing, canvas, fiber

2004–2005

mission statement
manifest creative research gallery and drawing center
a 501(c)(3) not-for-profit corporation

executive director

jason franz

board of directors

kristin cullen

*assistant professor of design,
university of cincinnati*

jason franz

visual artist, professor of art and design

elizabeth kaufman

*graduate student in fine art,
university of cincinnati*

kevin muenta

*assistant professor of painting,
northern kentucky university*

brigid o'kane

*associate professor of design,
university of cincinnati*

interns

ai-ling chang

senior intern

trevor ponder

assistant to the director

jeff salter

academic gallery intern

william haigh

gallery intern

founded in may of 2004, the *manifest creative research gallery and drawing center* is located in east walnut hills in cincinnati, ohio, occupying the formerly vacant storefront property of 2727 woodburn avenue minutes away from downtown cincinnati, university of cincinnati, northern kentucky university, art academy of cincinnati, the school for creative and performing arts, and xavier university.

manifest's goal as a non-profit organization is to serve as a venue for the display and experience of insightful, thought-provoking art and design, as well as to function as a hub for creative research and innovation at all levels of artistic endeavor. *manifest's* location in the urban neighborhood of east walnut hills was chosen to take advantage of the community's own long range plan (*06 vision 2010*) to guide the revitalization of the area, in part, by incorporating the arts. *manifest* is committed to high academic standards, and seeks to engage the community at that level.

manifest

creative research gallery and drawing center

2727 woodburn avenue

cincinnati, ohio 45206

513 861 3638

www.manifestgallery.org