

MANIFEST

A microscopic view of plant cells, showing a grid-like structure of cells with varying shades of green and yellow. The cells are roughly hexagonal or polygonal in shape, with distinct cell walls. The overall appearance is that of a cross-section of a plant stem or leaf, with some cells appearing larger and more prominent than others. The background is dark, making the cellular structure stand out.

v19

rites of PASSAGE 2007



Executive Director

Jason Franz

Board of Directors

Katherine Dintenfass

Jason Franz

Elizabeth Kauffman

Brigid O'Kane

Andy Schaub

Associate Directors

Kristin Cullen

Kevin Muentz

Junior Board

Trevor Ponder

Jeffrey Salter

Interns

Lynda Camp

Kate Holterhoff

Karina Meza

Amanda Nurre

Mission Statement:

Manifest enhances the role of art and design in society by cultivating and focusing the transformative power of creativity in the visual arts. Manifest benefits people in the global and local community, including professionals, students, and the public, by creating quality-centered experiences focused on contemporary visual arts and related activities in the context of creative exploration.

MANIFEST



vol 19

MANIFEST is a 501(c)(3) non-profit organization

MANIFEST VOLUME NINETEEN

© 2007 MANIFEST PRESS

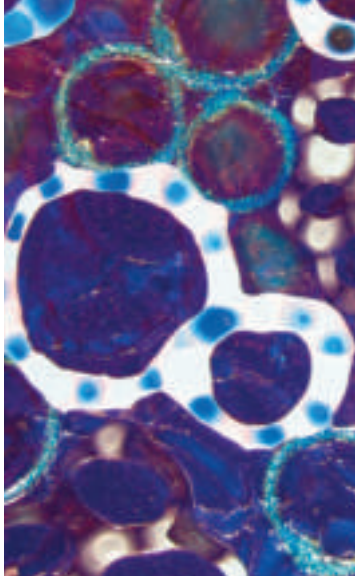
All rights reserved. No part of this publication may be reproduced in any way without written permission from the publisher. All rights in each work of art reproduced herein are retained by the artist.

Manifest Creative Research Gallery and Drawing Center
2727 Woodburn Avenue, P.O. Box 6218, Cincinnati, OH 45206
(513) 861-3638

First Printing - April 2007, edition of 50
Designed by Jason Franz
Printed by PrintPelican.com

Cover details by:
Jessica Rahn and Nathan Sutton

Support provided by:



A vertical strip on the left side of the page shows a microscopic view of plant cells, likely stained with iodine. The cells are roughly rectangular and arranged in a grid-like pattern. Some cells contain dark, circular structures, possibly starch granules. The colors range from light blue to dark purple.

MANIFEST

CREATIVE RESEARCH GALLERY
AND DRAWING CENTER

April 27 - May 25, 2007

rites of passage 2007



curated by Jason Franz



rites of PASSAGE 2007

Trey Hoover

Rebecca Nebert

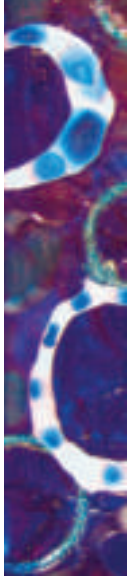
Tim Parsley

Jessica Rahn

Taylor Stephenson

Hana Studer

Nathan Sutton



Conceived and initiated in 2005, The Rites of Passage exhibits were developed in order to support student excellence by offering a public venue for the display of advanced “creative research”; to promote young artists as they transition into their professional careers; and to bring the positive creative energies of regional institutions together in one place.

For this year's Rites exhibit Manifest screened 276 works from senior undergrads in twelve national college programs including the Art Institute of Chicago, Auburn University, Baylor University, Herron School of Art and Design, Miami University of Ohio, Oberlin College, Northern Kentucky University, Thomas More College, University of Buffalo, University of Cincinnati, University of Minnesota, and University of Pittsburgh.

We are delighted that the Rites project now attracts participation by ambitious students from such a wide geographical radius. It is anticipated that this will mark a key change in the future installments of this exhibit series, and will increase its already significant value to the exhibitors, competitors, and the viewing public.

22 works by seven artists from Baylor University, Thomas More College, University of Cincinnati, and University of Buffalo make up this third annual Rites of Passage exhibit.

Jason Franz
Executive Director

Admiration of Penguins

monotype, 10" x 8", 2006

Trey Hoover

thomas more college, kentucky



Untitled
monotype, 9.5" x 8", 2006



Choose (top); **Nourish** (bottom)
ebony pencil on mylar, 3.5" x 9.5", 2007

Tim Parsley
university of cincinnati, ohio





Clean (top); **Press** (bottom)
ebony pencil on mylar, 3.5" x 9.5", 2007, 2006

Embrace

acrylic on wood, 80" x 36", 2006

Rebecca Nebert

university of cincinnati, ohio

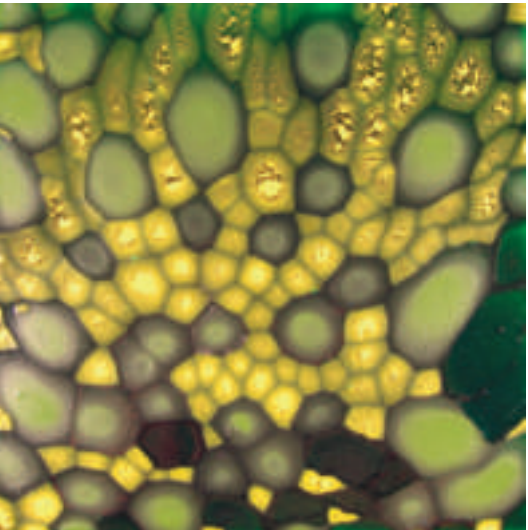


Jessica Rahm

University of Cincinnati, Ohio

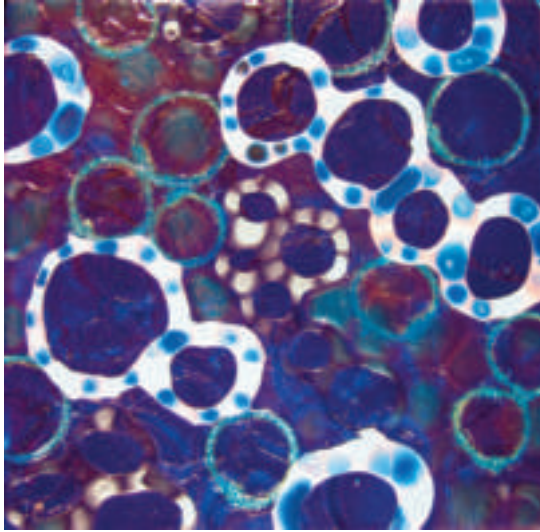
Chlorophyll

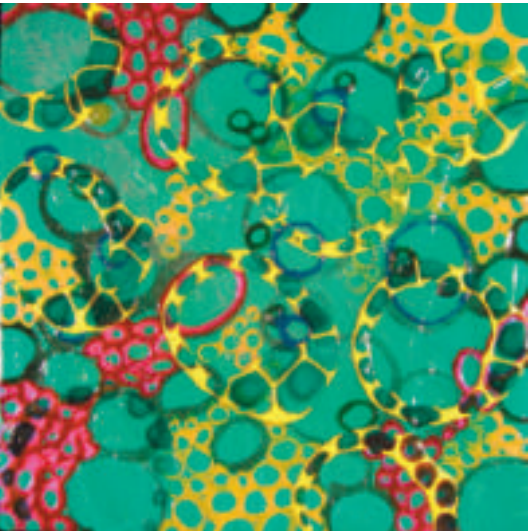
enamel, acrylic, and glass paint on canvas
8" x 8", 2007



Blue

emamel, acrylic, and glass paint on canvas
8" x 8", 2007



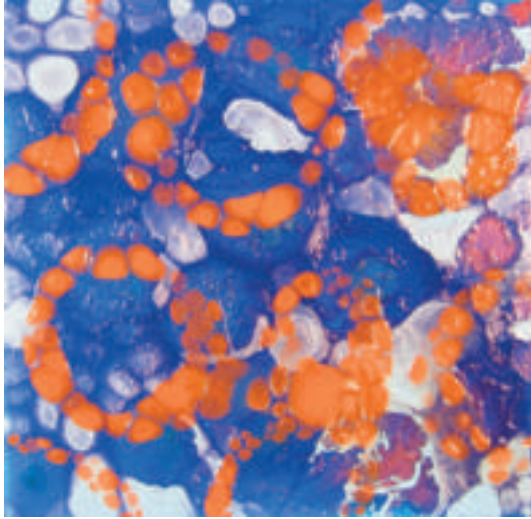


After Image

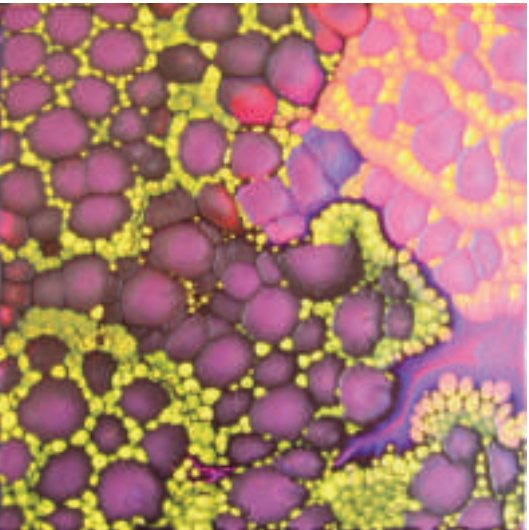
enamel, acrylic, and glass paint on canvas
12" x 12", 2007

Orange

enamel, acrylic, and glass paint on canvas
8" x 8", 2007



Pomegranate
enamel, acrylic, and glass paint on canvas
8" x 8", 2007



Emma

oil on canvas, 48" x 24", 2006

Taylor Stephenson

thomas more college, kentucky



Mask with Figure
oil on canvas, 48" x 24", 2007



Melissa

oil on canvas, 48" x 24", 2007



Nathan Sutton

university of buffalo, new york

Analogs 2

oil on aluminum screen

9.5" x 12", 2006



Analogs 1

oil on aluminum screen

9.5" x 9.5", 2006



Ascent to Our Destination

oil on aluminum screen

27.5" x 76", 2006



Also *Towards Boulder*

oil on aluminum screen

12" x 34", 2006



Analog 5
oil on aluminum screen
9.5" x 12", 2006



Number 1

mixed media on paper, 51" x 60", 2006

Hana Studer

baylor university, texas





Number 2
mixed media on paper, 50" x 54", 2006







MANIFEST

CREATIVE RESEARCH GALLERY AND DRAWING CENTER

2727 woodburn avenue cincinnati, ohio 45206
513 861 3638
www.manifestgallery.org