



# MANIFEST

v18

*It's In Your Head*  
Approaches to Likeness

Selections from the 2006  
*National Drawing Annual*



#### Executive Director

Jason Franz

#### Board of Directors

Katherine Dintenfass

Jason Franz

Elizabeth Kauffman

Brigid O'Kane

Andy Schaub

#### Associate Directors

Kristin Cullen

Kevin Muentze

#### Junior Board

Trevor Ponder

Jeffrey Salter

#### Interns

Lynda Camp

Kate Holterhoff

Karina Meza

#### Mission Statement:

Manifest enhances the role of art and design in society by cultivating and focusing the transformative power of creativity in the visual arts. Manifest benefits people in the global and local community, including professionals, students, and the public, by creating quality-centered experiences focused on contemporary visual arts and related activities in the context of creative exploration.



# MANIFEST

vol 18

*MANIFEST is a 501(c)(3) non-profit organization*

**MANIFEST VOLUME EIGHTEEN**

© 2007 MANIFEST PRESS

All rights reserved. No part of this publication may be reproduced in any way without written permission from the publisher. All rights in each work of art reproduced herein are retained by the artist.

**Manifest Creative Research Gallery and Drawing Center**  
2727 Woodburn Avenue, P.O. Box 6218, Cincinnati, OH 45206  
(513) 861-3638

First Printing - March 2007, edition of 75  
Designed by Jason Franz  
Printed by PrintPelican.com

Cover details:  
Michael Nichols, *Celia*;  
Marc Leone, *Crater #2001*

Support provided by:





# MANIFEST

CREATIVE RESEARCH GALLERY  
AND DRAWING CENTER

march 16 - april 13, 2007

***It's In Your Head***  
Approaches to Likeness

Selections from the 2006  
***National Drawing Annual***



curated by Jason Franz

*It's In Your Head*  
Approaches to Likeness



Ruth Adams

Jessica Bechtel

Andrew Dailey

Gary Duehr

Rick Finn

Greg Jones

Collin Moses

Michael Nichols

Tim Parsley

Brent Payne

Rebecca Weller





Our jury for *It's In Your Head* received a flood of over 300 entries from 150 artists in 25 states and 5 countries including Canada, England, Israel, Russia, and the U.S. This by far breaks all records for exhibit submissions at Manifest. I cannot say for certain what caused this unpredictable and delightful jump in submissions. However, we suspected a show exploring traditional *and* non-traditional approaches to portraiture would prove interesting. Indeed it has.

We identify each other primarily by using the head and face as reference. We speak to each other's heads, and from our own. The head is the grand central station of all our worldly activities, even for, as many suggest, our sexuality. The head is not just the proverbial superficial cover of a book. Rather it is the cockpit for our intellectual database, our conceptual drive train, which is the truest hinge between our better and worse sides as individuals and as a specie.

In the head, after all, reside the "windows into the soul". If there is such a thing as divinity, then it's in our heads. It follows then that the opposite would also be true. And if there exists any means of judging such intimate glimpses, it's in *your* head.

To narrow over 300 entries down to 18 is no simple matter. Nevertheless our jury and curatorial process offers up these twelve artists' insights from inside their own heads into yours.

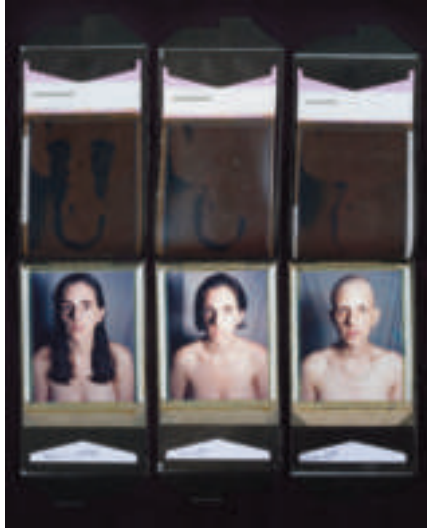
Jason Franz

**Jan 1st, Jan 4th, June 5th**

inkjet print, 20" x 16", 2004

**Ruth Adams**

Lexington, Kentucky



**Jessica Bechtel**

Cincinnati, Ohio

---

**Held**

oil on panel, 48" x 36", 2006



**Bolts**

acrylic on panel, 7" x 7", 2006

**Andrew Dailey**  
centerville, ohio

---



**Andrew Dailey**  
centerville, ohio

---

***Hammer Smooch***  
acrylic on panel, 7" x 7", 2006



***Imbalance***

acrylic on panel, 7" x 7", 2006

**Andrew Dailey**  
centerville, ohio

---



**Gary Duehr**

somerville, massachusetts

---

***Self-Portrait With Root Canal***

pigment print on watercolor paper  
20" x 30", 2006



**Farmer Heim**

reduction woodcut, 10" x 10", 2006

**Rick Finn**

cincinnati, ohio





**Rick Finn**

cincinnati, Ohio

---



**OSR 9604**

reduction woodcut, 10" x 10", 2006

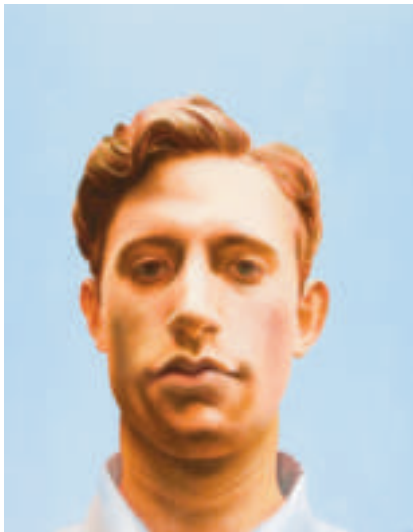
**14 1/4" X 14 1/4" Square**  
oil on canvas, 48" x 48", 2006

**Greg Jones**  
sylvania, ohio

---







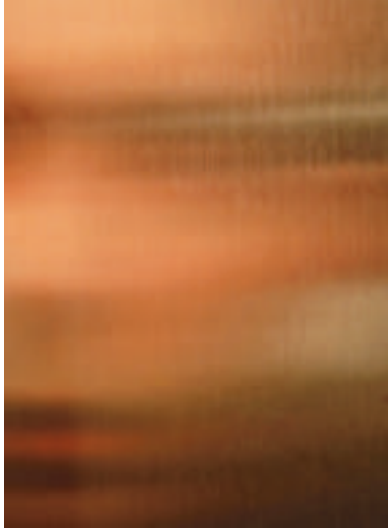


***Transformation***

digital metallic print on photographic  
paper, 12" x 8", 2007

**Ted Kauflin**  
cincinnati, ohio

---



**Collin Moses**

bloomington, indiana

---

***We Are Not***

stoneware, 19" x 13" x 14", 2006









**Subsist**

pastel on paper, 24" x 18", 2006

**Michael Nichols**

bowling green, Kentucky

---



**Michael Nichols**

bowling green, kentucky

---

***Celia***

pastel on paper, 20" x 15", 2006



***Self-Portrait with Hat***

graphite on paper, 14" x 11", 2007

**Tim Parsley**

cincinnati, ohio

---



**Tim Parsley**  
cincinnati, ohio

---

**Aaron**  
graphite on paper, 14" x 11", 2007



***Self-Portrait in Black Shirt***

oil on muslin mounted on panel, 7" x 5"  
2006

**Brent Payne**  
oxford, ohio

---



**Brent Payne**

oxford, ohio

---

***Self-Portrait***

oil on muslin mounted on panel  
6" x 4", 2006



**Being**

oil on canvas, 60" x 48", 2005

**Rebecca Weller**  
cincinnati, ohio

---







miami beach, florida

**Felice Grodin**

savannah, georgia

**Jennifer Jenkins**

mesa, arizona

**Marc Leone**

athens, ohio

**Todd McGill**

st. michael's, arizona

**Kevin O'Grady**

institute, west virginia

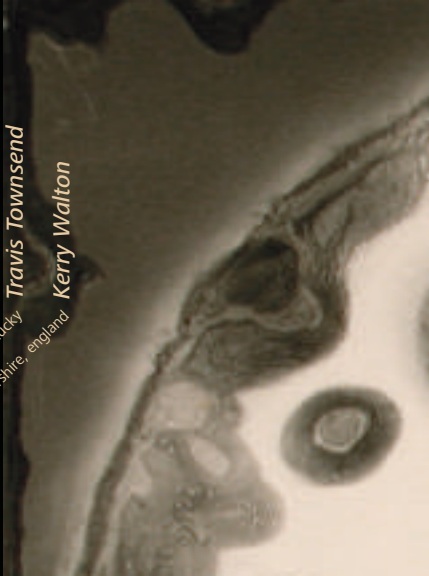
**Brent Thomas**

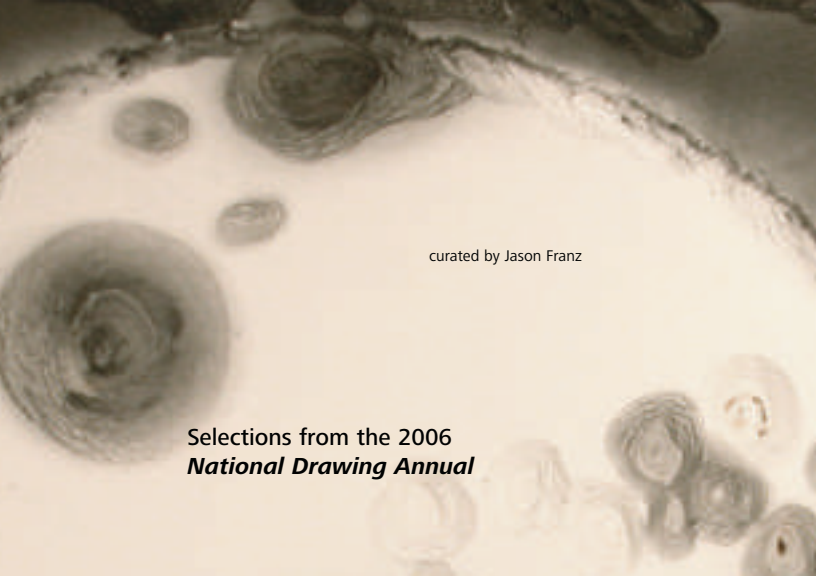
lexington, kentucky

**Travis Townsend**

leicestershire, england

**Kerry Walton**





curated by Jason Franz

Selections from the 2006  
***National Drawing Annual***

The National Drawing Annual project was conceived as an effort to support the recognition, documentation, and publication of excellent, current, and relevant works of drawing in the United States and beyond. It is an extension of Manifest's Drawing Center mission, which promotes, features, and explores drawing as a rich and culturally significant art form through the pursuit of scholarly activities.

For the 2006 NDA Manifest received over 350 works from 121 artists in 27 states and six countries. The exhibit-in-print publication will include 68 works by 33 artists from 16 states and four countries, including England, Russia, Scotland, and the U.S.

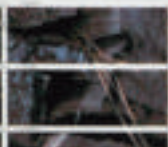
This second edition of the publication and corresponding *Selections* exhibit marks a key event for Manifest and the NDA. If two points make a line, and a line possesses a trajectory, then with the NDA in its second year we now have a clear idea of where the project is headed long term. With a significant increase in the number of entries, artists selected, and works included, the NDA is proving quite successful. Furthermore, the quality of work continues to meet the very high standards of our jury, which involves a multi-part and intense process supported by professional and academic advisors.

Interestingly, this year's annual will contain more abstraction than the prior year. And this *Selections* exhibit reflects that trend, with only two out of eight works containing recognizable subject matter.

All eight works included in this exhibit suggest systems and organic processes through which things are changed or in the process of changing. This underlying theme also permeates the entire NDA project, and is for the most part a coincidental unity that arose out of the blind scoring of our jury based on quality (not personal preference). We view this, at least initially, as being indicative of the foremost thinking of contemporary artists as they approach drawing as an art form.

These eight works, by eight artists from Arizona, Florida, Georgia, Kentucky, Ohio, West Virginia, and Leicestershire, England are offered as prime representatives of the 68 exceptional works of drawing included in the 2006 National Drawing Annual.

Jason Franz



**Untitled (01)**

ink on Mylar, 24" x 36", 2005

**Felice Grodin**  
miami beach, florida



**Jennifer Jenkins**  
savannah, georgia

---

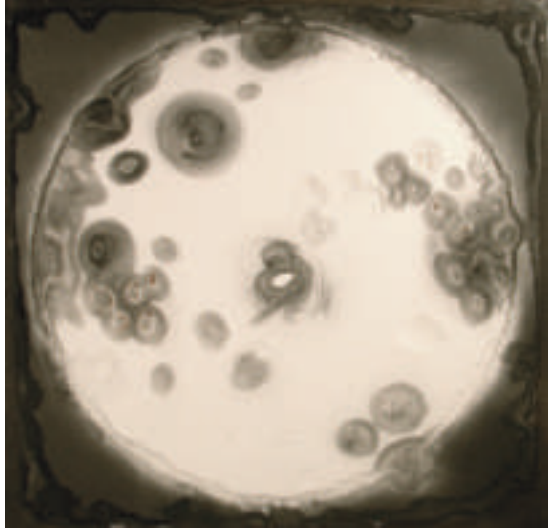
***Arranging an Aftermath***  
machine embroidery, monoprnt, india ink  
on silk, 25" x 31" x 3", 2006



**Crater #2001**

graphite on paper, 32" x 32", 2006

**Marc Leone**  
mesa, arizona





**Todd McGill**

athens, ohio

---

***Connective***

graphite on paper, 22" x 30", 2006



**Blonde Marauder**

watercolor and paper, 12" x 9", 2006

**Kevin O'Grady**  
st. michael's, arizona

---



**Brent Thomas**

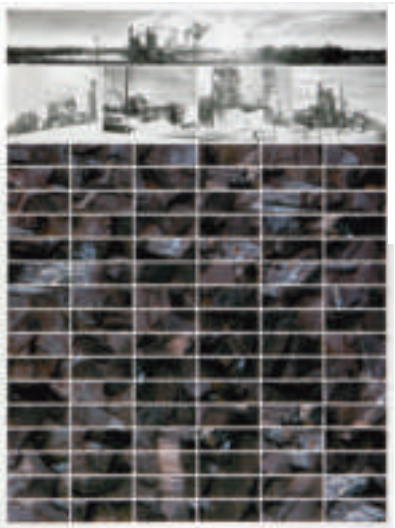
Institute, west virginia

---

**Study Hard Boys**

graphite and digital output, 31.5" x 24"

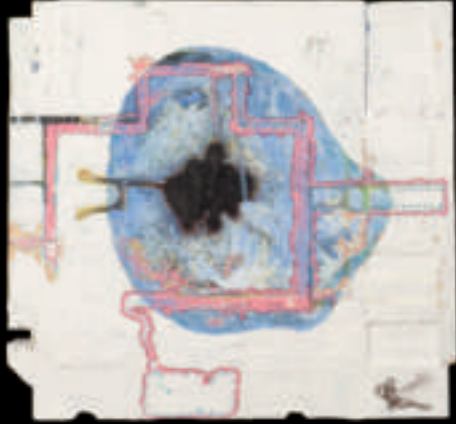
2006



**Floater**

permanent marker, ink, and acrylic paint on  
paper and wood, 14" x 14" x 3", 2006

**Travis Townsend**  
lexington, kentucky



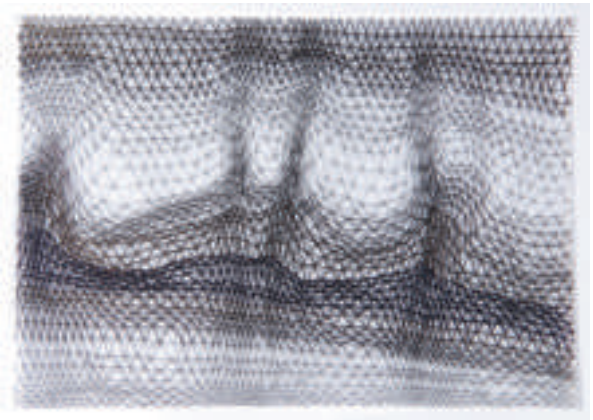
**Kerry Walton**

leicestershire, england

---

***Triptych 1***

cartridge paper, black ink, and  
tracing paper, 8.5" x 12", 2006









**MANIFEST**

CREATIVE RESEARCH GALLERY AND DRAWING CENTER

2727 woodburn avenue cincinnati, ohio 45206  
513 861 3638  
[www.manifestgallery.org](http://www.manifestgallery.org)