

***** FOR IMMEDIATE RELEASE *****

**Exhibiting Works of Environmental Consciousness,
Gallery Closes First Acclaimed Season with a Noble Cause**

(Partial Proceeds to Benefit the Nature Conservancy)

with

GREEN

**MANIFEST CREATIVE RESEARCH GALLERY
and DRAWING CENTER**

July 15 – August 12, 2005

OPENING RECEPTION: Friday, July 15, 6-10 p.m. (refreshments will be served)

GALLERY HOURS*: Tuesday through Friday 2 – 7:00 p.m., Sat. 12 – 5 p.m. (during exhibit run)

*Or by appointment for groups.

LOCATION: 2727 Woodburn Avenue, East Walnut Hills, Cincinnati, Ohio 45206

(Just south of Madison Rd. at DeSales Corner. Map is available at www.manifestgallery.org/map)

PARKING: On street and parking across the street in DeSales Business Lot

CONTACT: Jason Franz, exhibit Curator and Manifest Co-Director, jason@manifestgallery.org

GALLERY PHONE: 513-861-3638

FOR MORE INFO: <http://www.manifestgallery.org>

FULL COLOR EXHIBIT CATALOG AVAILABLE: <http://www.manifestgallery.org/manifestpress>

Manifest will conclude its first and very successful season of exhibits with *GREEN*, which is the result of an international call for entries for works of “environmental consciousness.”

Creative professionals and students in all disciplines were invited to submit works that explore, propose solutions for, comment upon, criticize, glorify, reveal, enlighten, motivate, or question current local or global environmental issues. The role of Artists, Designers, Architects, and Planners in solving (or creating) the dilemma of the unhealthy Planet is underestimated, by both the general public and many of those very same creative individuals.

Manifest proposes to reveal through this exhibit, just how poignant, motivating and informative the creative professions can be regarding this area of study, which is so often assumed to be purely scientific. Our goal

with GREEN is to present to the public an unusual and thought-provoking exhibit – hopefully one that leaves you looking at art, artists, and the world around you, a little differently.

Eleven artists from six states will exhibit a total of twenty works.

Highlights of what you'll see:

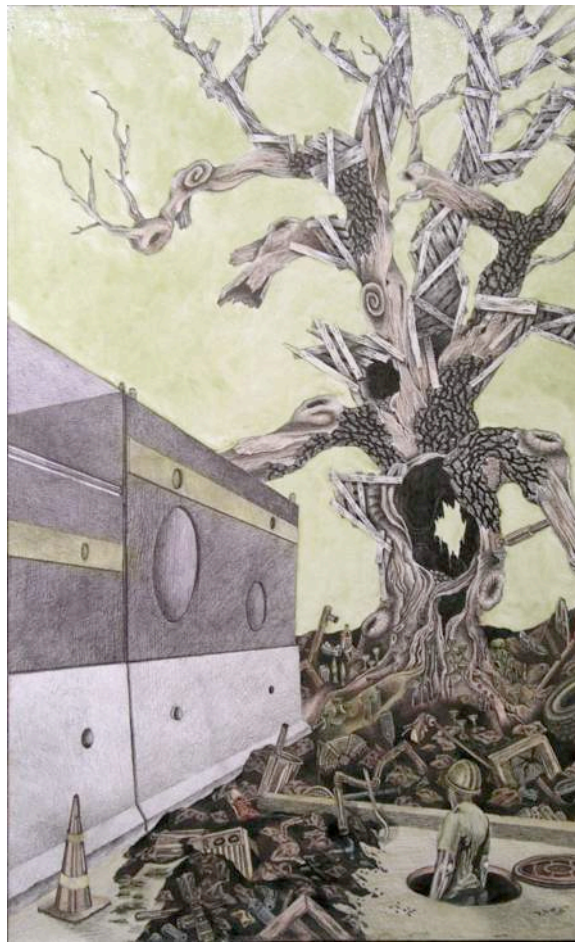
- A 120" x 144" ceiling-suspended net assembled from discarded plastic packaging, entitled "Drift".
- A contemplative mandala as geometric as Islamic tile-work, but made from images of trees.
- A postage stamp that bleeds evergreens and crop dusting chemicals onto the gallery walls.
- A giant apple.
- Surreal undersea creatures, (bio)morphing frogs, and recycled fish.
- An underlying theme of oceans and trees, mixed with a touch of a bizarre garden of Eden.



Andrea Moreau, (Columbus, Ohio), *Poland (Evergreen Forest)*, postage stamp and colored pencil on paper and wall, 2005 (detail)



Susan Kirby, (Middle Village, New York), *White Rats*, acrylic, plastic, and traps on wood, 10" x 17" x 2", 2003



Roscoe Wilson, (Fairfield, Ohio), *Man in a Hole*,
graphite and oil on paper, 29" x 19" x 7", 2005



Allison Trentelman, (Belfast, Maine), *Mandala 461*
archival inkjet pigment print, 12" x 12", 2005

Mission Statement:

Manifest's goal as a non-profit organization is to serve as a venue for the display and experience of insightful, thought provoking art and design, as well as to function as a hub for creative research and innovation at all levels of artistic endeavor. Manifest's location in the urban neighborhood of East Walnut Hills was chosen to take advantage of the community's own long range plan (06 Vision 2010) to guide the revitalization of the area, in part, by incorporating the arts. Manifest is committed to high academic standards, and seeks to engage the community at that level.