

FOR IMMEDIATE RELEASE

THREE YOUNG ARTISTS CONTINUE FIRST ANNUAL RITES OF PASSAGE

**MANIFEST CREATIVE RESEARCH GALLERY
and DRAWING CENTER**

May 3 – 27, 2005

OPENING RECEPTION: Friday, May 6, 6-10 p.m. (refreshments will be served)

GALLERY HOURS: Tuesday through Friday 2 – 7:00 p.m., Sat. 12 – 5 p.m. (during exhibit run)

LOCATION: 2727 Woodburn Avenue, East Walnut Hills, Cincinnati, Ohio 45206
(map is available at www.manifestgallery.org/map)

PARKING: On street and parking across the street in DeSales Corner Business Lot

CONTACT: Jason Franz, Co-Director at 513-290-2574, info@manifestgallery.org

GALLERY PHONE: 513-861-3638

FOR MORE INFO: <http://www.manifestgallery.org>

This second of the two-part *Rites of Passage* exhibit series presents work by three seniors in the art programs of Indiana University and the University of Cincinnati. Ryan Boatright, Amy Bogard, and Angie Kelly were selected out of a pool of entrants competing to exhibit their artwork at Manifest. The *Rites of Passage* exhibits were conceived in order to support student excellence by offering a public venue for the display of advanced 'creative research'; to promote young artists as they transition into their professional careers; and to bring the positive creative energies of regional institutions together in one place.

Featuring abstract mixed media paintings, digital photography, and sculptural wall installations, this exhibit provides a complete counterpoint to the first *Rites* installment.

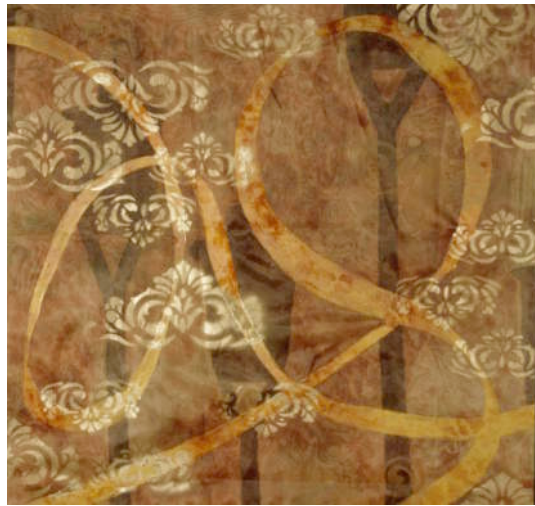
In the **Main Gallery** Ryan Boatright (Indiana University) will be exhibiting a selection of large pigmented inkjet images from his *Exurbia* series – photographs exploring the fortress-like nature of suburban sprawl. The eerie, almost desolate, minimalism of these images underscores the artist's conceptual intent – a critique of modern culture. Accompanying Boatright in the Main Gallery, Amy Bogard (University of Cincinnati) will install two expansive wall sculptures amongst the *Exurbia* photographs. Bogard's works challenge traditional notions of sculpture, and offer an experience of playful irony with an edge of seriousness.

In the **Drawing Room** Angie Kelly (University of Cincinnati) will present a solo exhibit of her colorful abstract mixed media and collage images. These works offer up mysterious fragmented layers, which Kelly explains relate to memories, and how over time (and accumulation) some details are lost. She invites the viewer to sift through the images to compose (or discover) a narrative.

** Manifest recommends a two-exhibit reception evening on May 6th, with Tamie Beldue's *Immeasurable Realities* in the Meyers Gallery at UC (see previous release) from 6-8p.m. and *Rites of Passage* at Manifest from 6-10 p.m. Dinner and live Jazz at Simone's just a block and a half north from Manifest on Madison Road would make the artful evening complete!



Ryan Boatright, Indiana University



Angie Kelly, University of Cincinnati



Amy Bogard, University of Cincinnati

Note: hi-res images and detailed info available upon request. Send e-mail to: info@manifestgallery.org

Mission Statement:

Manifest's goal as a non-profit organization is to serve as a venue for the display and experience of insightful, thought provoking art and design, as well as to function as a hub for creative research and innovation at all levels of artistic endeavor. Manifest's location in the urban neighborhood of East Walnut Hills was chosen to take advantage of the community's own long range plan (06 Vision 2010) to guide the revitalization of the area, in part, by incorporating the arts. Manifest is committed to high academic standards, and seeks to engage the community at that level.