

MANIFEST v45



GuideBook | 6th Annual **Magnitude 7**

MANIFEST

CREATIVE RESEARCH GALLERY
AND DRAWING CENTER

volume 45

GuideBook

6th Annual

Magnitude 7

MANIFEST is a 501(c)(3) non-profit organization

MANIFEST VOLUME FORTY-FIVE

© 2010 MANIFEST PRESS

All rights reserved. No part of this publication may be reproduced in any way without written permission from the publisher. All rights in each work reproduced herein are retained by the artist/author.

Manifest Creative Research Gallery and Drawing Center

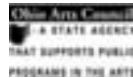
2727 Woodburn Avenue, P.O. Box 6218, Cincinnati, OH 45206
(513) 861-3638

First Printing - May 2010
Designed by Jason Franz
Printed by PrintPelican.com

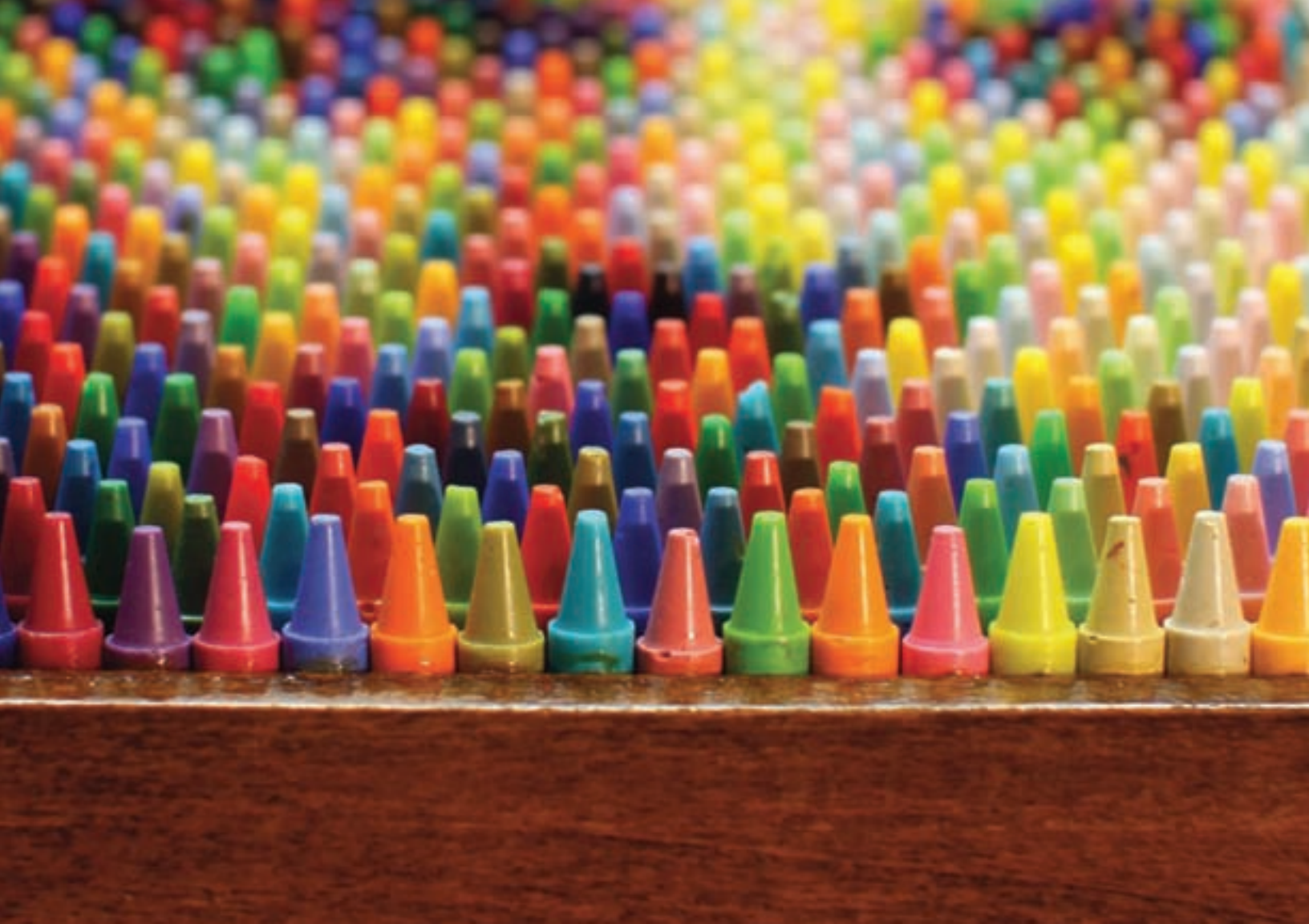
Cover image by Jacquelyn Walther
Back cover image by Cheryl Wassenaar

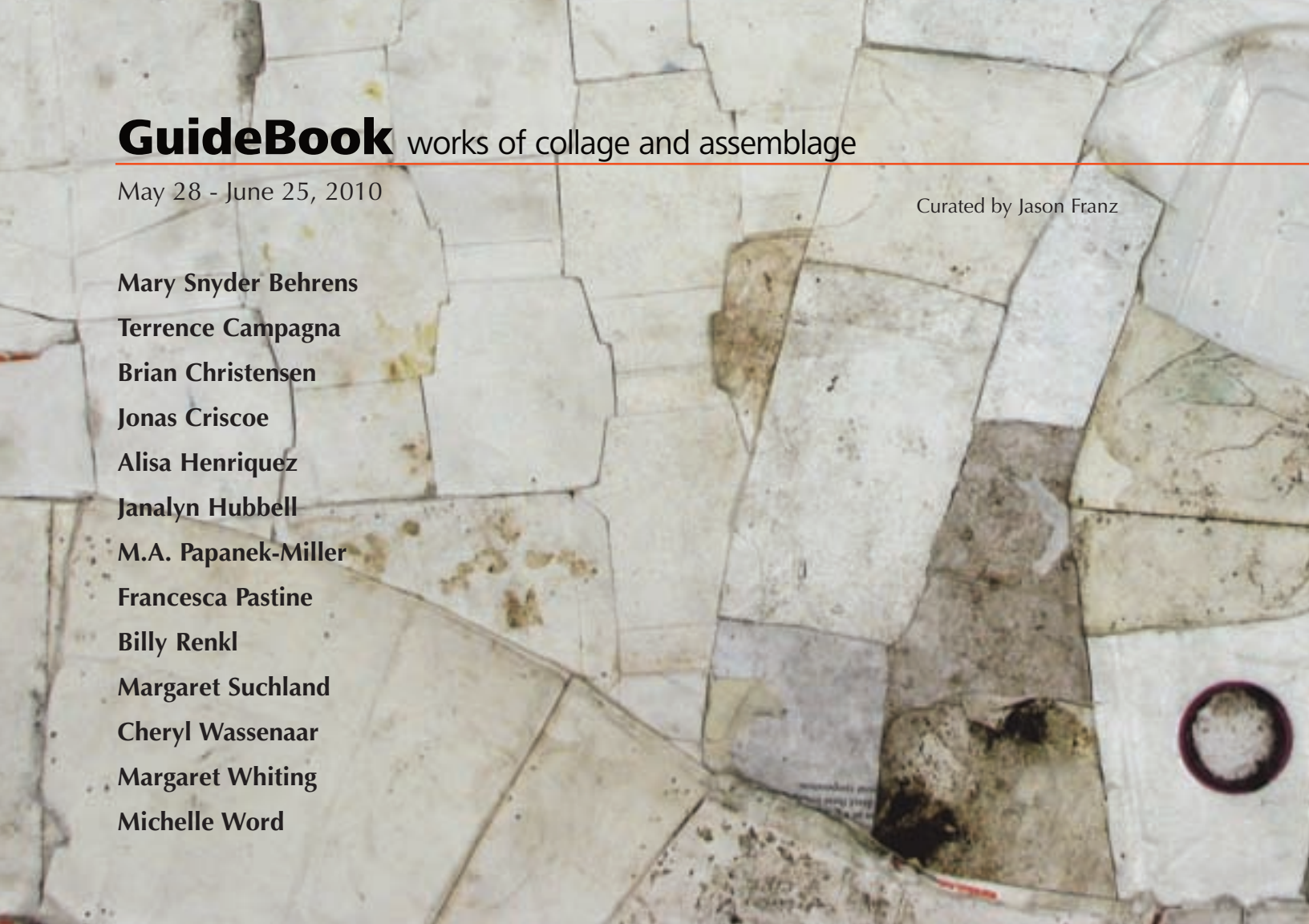
THANK YOU!

Manifest's 2009-2010 season
is supported by funding from:



FineArtsFund



The background of the entire page is a complex collage of various materials, including pieces of aged, yellowed paper, white fabric, and some darker, textured elements. The collage is composed of irregular, overlapping shapes that create a sense of depth and texture. A thin red horizontal line is positioned below the main title.

GuideBook works of collage and assemblage

May 28 - June 25, 2010

Curated by Jason Franz

Mary Snyder Behrens

Terrence Campagna

Brian Christensen

Jonas Criscoe

Alisa Henriquez

Janalyn Hubbell

M.A. Papanek-Miller

Francesca Pastine

Billy Renkl

Margaret Suchland

Cheryl Wassenaar

Margaret Whiting

Michelle Word



Glued and Screwed by the Philosopher's Stone

Creativity and cultural expression find sources of inspiration in surprising places and within unexpected materials. One might say that the truly creative life is one lived in such a way that ordinary things, those not commonly considered artful, are suddenly seen as being sublime. Certainly many types of art can provide a glimpse into this creative way. But works of collage and assemblage might do it best. With that premise in mind Manifest set out to present an exhibit which explores such work - an exhibit that may in fact serve as a guidebook to a creative, enlightened way of seeing and being in the world.

Thanks to the playful synergistic interchanges between Picasso and Braque, inspired by a roll of oak grained wallpaper in 1912, and the witty, almost mischievous machinations of Marcel Duchamp not long after, we have been freed to see beauty (or meaning) in most anything elevated into a context of art. It was these Parisian residents staking out new territory in a modern world full of change that drove creativity in the visual arts to a new paradigm. From them we have received an enormous blessing – and an ominous curse. We are empowered to make gold from the lead of urban detritus¹. Yet, ironically, we are in turn burdened with the responsibility of defining the difference between a piece of junk and a work of art. And, as we all know, this is not always the easiest of efforts.

For this exhibit, 207 artists submitted 470 works for consideration. Eighteen works by these 13 artists were selected to represent exemplary results from the collage and assemblage process. These works are carrying forward the modern traditions begun one hundred years ago.

JF

¹Assemblage and Collage are by pure definition art forms that combine found elements which were not originally intended as (raw) art media.

Mary Snyder Behrens
Dysart, Iowa

Smokes No. 13
collage/mixed media, 4.25" x 3", 2009



Terrence Campagna
Minneapolis, Minnesota

***Epistle #3, Undocumented Relationship
(Leslie, MI to Eaton Rapids, MI)***
found paper and collected Styrofoam,
108" x 84" x 1.5", 2008



Cut to the Chase

bronze and wood, 32" x 10" x 2", 2009



Brian Christensen
Springville, Utah

Office Chair
bronze and steel, 36" x 25" x 25", 2009



Jonas Criscoe

Spartanburg, South Carolina

Jumble

acrylic and collage on panel, 24" x 24" x 2", 2009

(courtesy of the Alix Refshauge Collection)





Alisa Henriquez
East Lansing, Michigan

It's All About You
acrylic paint & found paper/cardboard on
board, 47" x 22", 2010



Spring

collage & ink, 12" x 9", 2010



Janalyn Hubbell
Chicago, Illinois

Untitled (both images)
collage & ink, 12" x 9", 2010



M.A. Papanek-Miller
Chicago, Illinois

Run, III
mixed media on map on canvas, 30" x 30", 2004



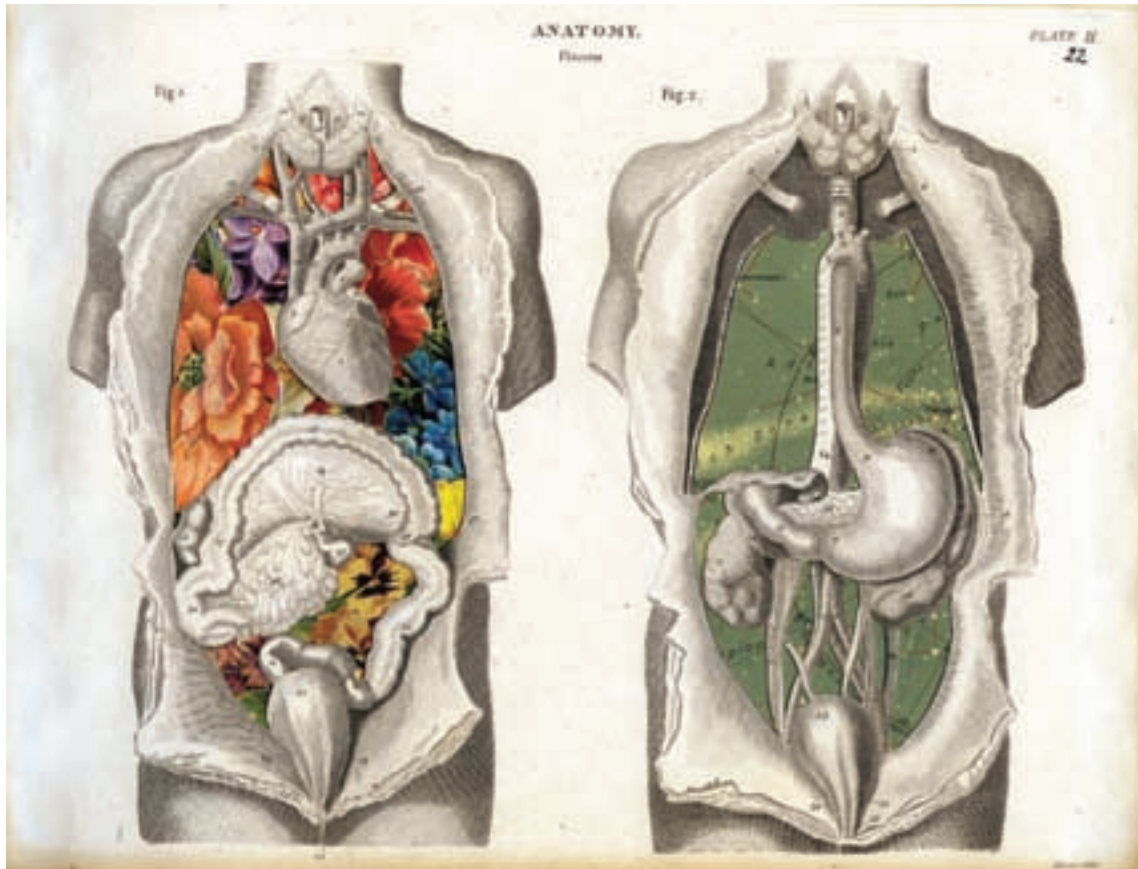
Francesca Pastine
San Francisco, California

Erosion (Artforum Excavation Series)
altered Artforum magazines
10.5" x 10.5" x 5", 2009



Billy Renkl
Clarksville, Tennessee

Anatomy: viscera
collage, 9" x 11", 2005



Margaret Suchland
Oro Valley, Arizona

Postmark n. 1
collage, 6" x 3.5", 2009



Postmark n. 3
collage, 6" x 4", 2009

RM (Lemp + Cherokee)

found commercial signage, oil & plastic, 18.75" x 12" x 2.75", 2003



Cheryl Wassenaar
Saint Louis, Missouri

ous (5th + Main)
found commercial signage
14" x 16.5" x 3", 2004



Margaret Whiting
Waterloo, Iowa

Analysis
law book pages & laboratory test tube racks, 6" x 10" x 10", 2006



Michelle Word
Lansing, Michigan

***Droseraceae*, 2009**
collage & mixed media on panel
48" x 48" x 6", 2009



...occurred."
W. 573.
...Words
...Proxi-
...ing In-
...st proxi-
... negligence
... which the
... condition
... dependent

Webe is the
... to the dut
... on a private
... pose the hel
... man. The cl
... The Govern
... it to be true
... true, becau
... ed as an att
... ed lengthy l
... ments. We

...ing its ad-
... said:
... tion of the
... he states he
... railroad offi-
... evidence to
... ly witness,
... ed here, was
... show they
... to get him,
... that knew
... to get any-
... this court,

In Gladw
180 N. W.
... been renew
... brought on
... usury was
... racted a ve
... of the note
... The autho
... viewed at
... tice Fellow
... that renew
... rious debt
... the origina

... 1923.)
... Declara-
... appeal.
... declaration
... whether
... rality, is
... pleading
... by bill of

...nd n is
...y.
...of
...t pro
...mate
...pole
...cross
...aha
...er
...less
...here

... State ex
... vernor had se
... t care to en
... P. It shows
... loner in 191
... e to collect
... and paid the
... a penny for
... and rendered

... they cannot
... is dismissed,
... guilty. Now,
... saying, 'We
... want to show
... on their mal-
... at we propose
... at a man is
... h they were
... was never
... is a fact we

In Allen
936, this
... conversely,
... al notes en
... debt incur
... fraudulent
... enforceable
... original in
... is said:

... a heating
... plaintiff, be-
... mon counts,
... at his claim,
... the ground
... technically
... of the declara
... made by th
... the declaratio

A L.
... stall-
... 802,
... would
... Securi-
... App. D.
... of that
... be condi-

...ected
...erdict
...do not
...or of
...aha
...e for
...been

...ore the Gor
... knew or sur
... numerous affid
... made against
... at hope for a
... he did. In
... ce, denying
... sufficiency

...nce him as
... ng upon their
... nce the court
... bear upon the
... the plaintiff was

October 29
... veiances w
... appears th
... of the claim
... newals of ot
... tioned. It
... corporate t
... opinion. T
... a payment
... Murphy, 68

...en on agr
... for repairs
... to pay fo
... have mad
... mises, a
... nothing
... they
... I in pos
... fore,

proof were the
prior to his
pulmonary
of the kidneys
Arbor and es
for treatment
hospital, but
therein. On
list of patients
relatives notified
on the 13th

ess had been
Johnson pay-
loss and tak-
In the end
and this suit
signee, to re-
on the ground
until after
the policy was
ated back by
was further

his action.
ly need
property
Peterson
the settle-
an instru-
"deed of
instrument
aintiff. By
that Peter-
and con-

available the
ed. The evi-
to justify the
ained only
Watertown,
and to assume
that a loss
of evidence
ely infer that
quantity when
ay at Duluth
of the short

eventence
public use
s use as a
as to these
the actual
y those for
out, name-
which would
as anything
which would
or Jossart

of equity
receiver be-
472, states
in actions be-
and a settle-
sirs, to take
the debts and
is a legitimate
arts of equity,
ed by the an-

charge of the
might say that
w a physical
was tried
a judgment
the policy and
showed per
to arouse

after the fir
nt contended
r issued, nor
denied all
was tried
a judgment
the policy and
of plaintiff

his furniture
ception of
which he re-
sideration of
all and com-
of all claims"
ment or after-
including all
ace, alimony,

ed to have been
sign that fac
ow the claim
question in
by its assign
rulings of the
show the ques
rival at Water

ands be
strip, if
that
at least
rmed, 1
v. M
Cunnin
W. 41

dissolution of
of the fir
tial to the ob-
alls within the
which the court
cases have fa
the probabili
still recogniz
termining whet
ted."

based on his
as revealed
ceased "was
ess of any in
the certifi
nurse in at

contract of insur
said in Mich
92 Mich. 49
that:
contract for ins
must meet
subject-matte
(2) the risk

released,
the in-
erson will be
A. Peterso
aintenance, or
his wife, wh
all of which
said, satisf

as a
under
and par
and J
be no
the p
y here
ing the
could

as a
under
and par
and J
be no
the p
y here
ing the
could

conduct has be
confidence wh
partners, is an
the court in gra
and a receive
ing a dissolution
torily appears
ttled to a
may, as a rule
partnership."

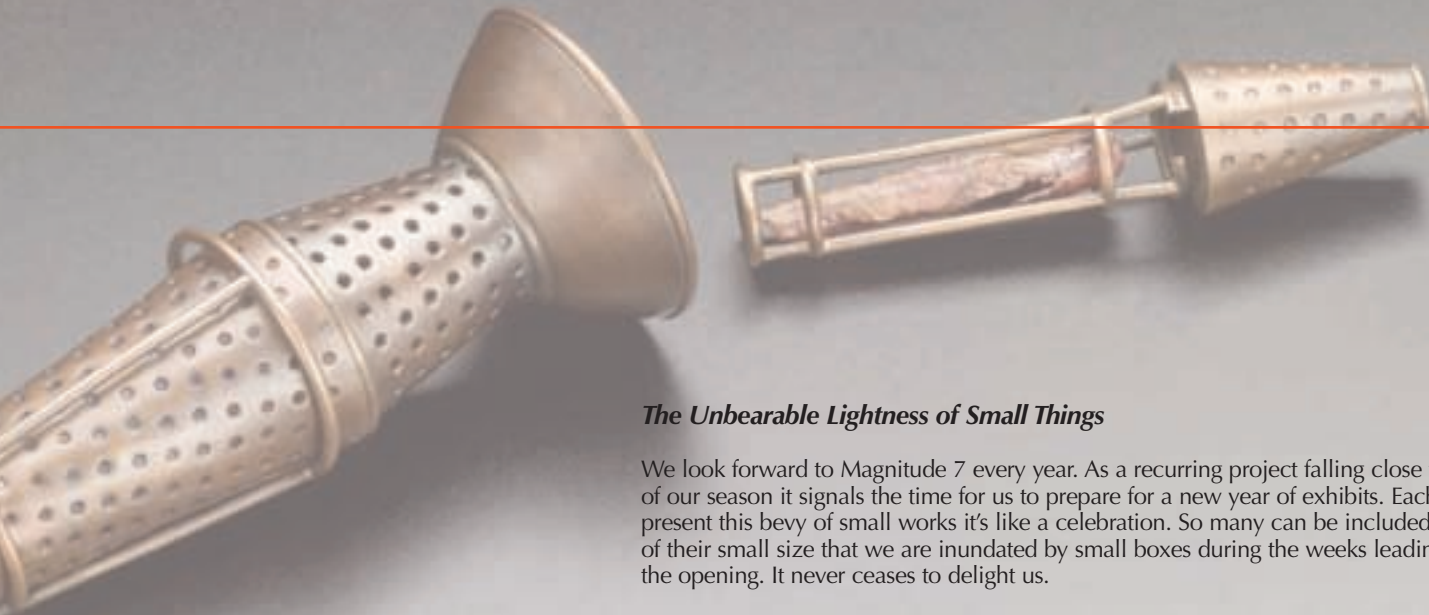
6th Annual **Magnitude 7**

May 28 - June 25, 2010

Curated by Jason Franz

Doug Anderson
Matthew Ballou
Amy Jo Brown
Todd Burroughs
David Detrich
Richard Elaver
Christian Faur
Matt Ferranto
Kenneth Hall
Paul Hazelton
Asuka Hishiki
Andrew Kuebeck
Carole P. Kunstadt
Andrea Orr
Michael Reedy
Alexandra Ryckman
Samantha Skelton
Eric Standley
Benjamin Stanley
Jacquelyn Walther
Lisa Wilson
McCrystle Wood
Elizabeth Zanzinger
Andrew Zimmermann





The Unbearable Lightness of Small Things

We look forward to Magnitude 7 every year. As a recurring project falling close to the end of our season it signals the time for us to prepare for a new year of exhibits. Each time we present this bevy of small works it's like a celebration. So many can be included because of their small size that we are inundated by small boxes during the weeks leading up to the opening. It never ceases to delight us.

Magnitude 7 may provide the most variety of any of our projects. Limited only by the size restriction that nothing be over 7 inches in any dimension, works of all types converge in the gallery. It is this that also enables the exhibit to be playful, exploratory, and surprising.

These small works evoke a sense of one's own physicality in a completely different way than larger sized art. They are more intimate, inviting approach and inspection. They make you think about touching or holding them. And, like short poetry, they are a challenge to craft with the same presence of their larger counterparts. Because of this they have earned a standing reservation in Manifest's schedule, justifying a yearly celebration in honor of small things migrating from around the world to spend four weeks basking in our galleries.

For this year's exhibit 169 artists submitted 350 works for consideration. Thirty-eight very small works by these 24 artists were selected for inclusion in this 6th Annual presentation of Magnitude Seven.

Oil Rig Shard

mixed media on tape laminations, 2" x 1.5" x .125", 2008



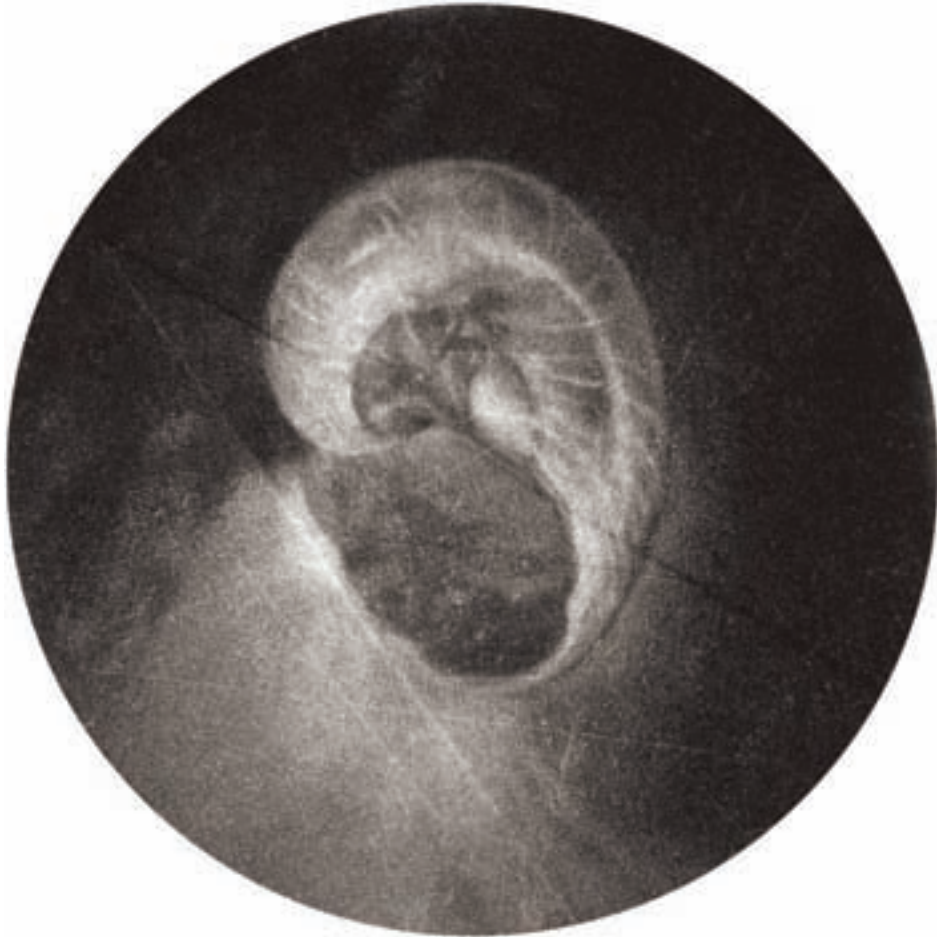
Doug Anderson
Geneseo, New York

Shear Shard
mixed media on tape laminations
2" x 1.5" x .125", 2008



Matthew Ballou
Columbia, Missouri

Galaxy (Shell, Fecundity, Emanation)
mezzotint print & embossment print, ink on paper, 3.5" in diameter, 2010



Amy Jo Brown
East Lansing, Michigan

Untitled
porcelain & nichrome wire
7" x 7" x 6", 2010



Memento I

oil paint on copper, 4" x 6", 2009



Memento II

oil paint on copper, 4" x 6", 2009



Todd Burroughs
Berkley, Michigan

Memento III
oil paint on copper, 6" x 4", 2009



David Detrich
Walhalla, South Carolina

Font
steel, 5" x 3" x 1", 2008



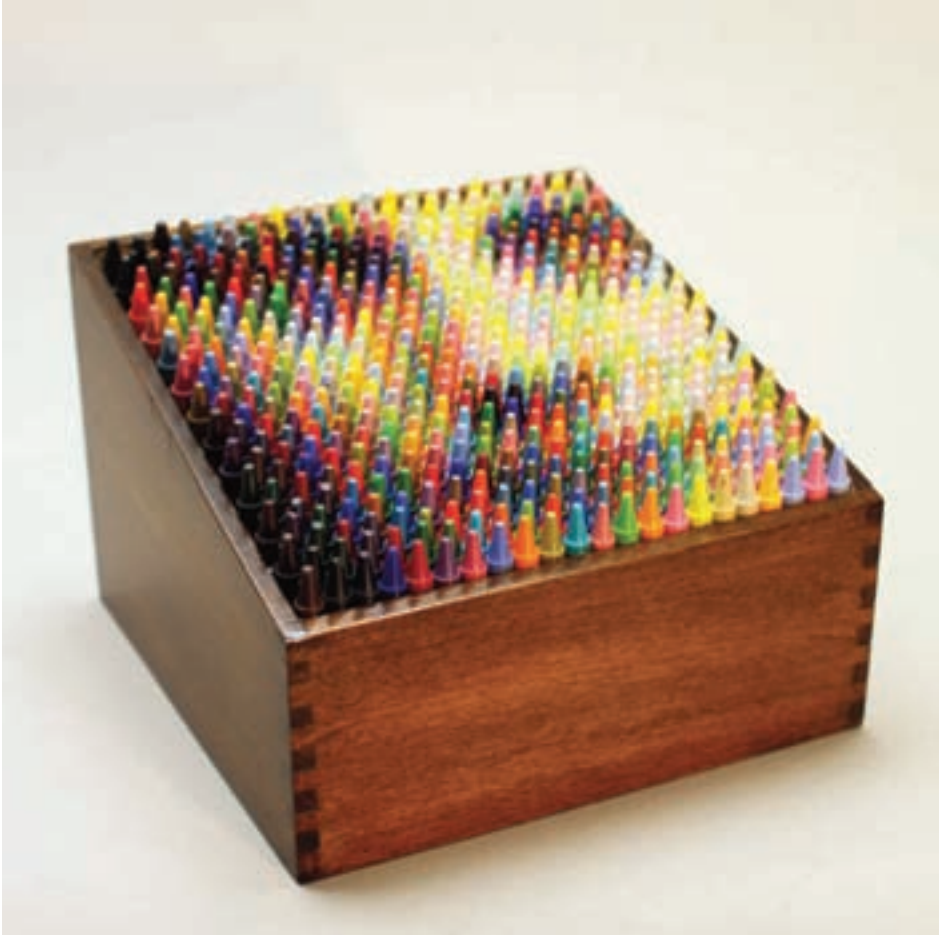
Richard Elaver
Fort Wayne, Indiana

Voronoi Set
SLS nylon (3D print), 5.5" x 3" x 3.5", 2009



Christian Faur
Granville, Ohio

Box of Crayons
hand cast encaustic crayons, 6" x 7" x 7", 2010



Matt Ferranto
New York, New York

Mags
Styrofoam, cardboard, paper, wood, pins,
polymer clay & paint, 7" x 1" x 1", 2009



Enigma

oil, shellac & acrylic on panel, 5" x 5" x 2", 2010



Kenneth Hall
Cedar Falls, Iowa

Quantum Leap
oil, shellac & acrylic on panel
4.5" x 5" x 2", 2010



Paul Hazelton
Margate, United Kingdom

RIP & Wrinkle
paper & pins, 3.6" x 3" x .2", 2008



H. Euphorbiae Fungus Caterpillar

watercolor, 7" x 7", 2010



Asuka Hishiki
Briarwood, New York

A. Atropis Fungus Caterpillar
watercolor, 7" x 7", 2010



Andrew Kuebeck
Bloomington, Indiana

Spitter Straw
functional sculpture, 6" x 2" x 2", 2006



Carole P. Kunstadt
New York, New York

Sacred Poem XXXVIII

thread, paper-pages from Parish Psalmody
dated 1844, 4" x 3.75" x .5", 2008



heard?
rightful due,
red?
at power,
rascal;
s bar the door
guest
hence depart;
il;
to my heart,
sin.
Mrs. Steele,
S. M.
lith,
ths we owe—
love,
sings slow?
frama
mind!
gas wretches we,
ly-kind!
ye;
circles run,
days.
ie God,
e to men;
two brutish things,
n.
ty God,
ke afresh;
a, these hearts of stone

My horse was by that,
The sinner must be born
Or sink to endless
2 When to the law I tross
It poured its curses on
I no relief could find
This fearful truth increas
The sinner must be born
And terror filled m
3 Again did Sinai's thund
And guilt lay heavy on
A vast, oppressive,
Alas, I read, and saw it
The sinner must be born
Or drink the wrath
4 The saints I heard with
How Jesus vanquished
And broke the fow
Yet, when I found this
The sinner must be born
I sunk in deep dos
5 But while I dars in rag
The gracious Saviour J
And felt his pity m
The sinner by his just
Now by his grace is bor
And sings redearn
287 *A Sinner And*
1 **VI** EARY of struggli
VV Hopeless to burst
At length I give the co

Sacred Poem LIV

thread, tissue, paper-pages from Parish Psalmody dated 1844, 4" x 4" x .5", 2008



Sacred Poem LVI

gold leaf, thread, tissue, paper-pages from Parish Psalmody dated 1844, 3.75" x 3.75" x 2", 2008



Andrea Orr
Seville, Ohio

Apple Blossoms
oil on canvas, 5" x 7", 2010



Michael Reedy
Ann Arbor, Michigan

Remembering Anne
mixed media on plastic
3.75" x 2.75", 2009



No. 5
mixed media on plastic
3.75" x 2.75", 2009



Philodendron Scandens

collodion ambrotype/silver on glass, 3.5" x 2.5", 2009



Dischidia Nummularia

collodion ambrotype/silver on glass, 3.5" x 2.5", 2009



Alexandra Ryckman
Chicago, Illinois

Crassula Arborescens
collodion ambrotype/silver on glass
3.5" x 2.5", 2009





Samantha Skelton
Oxford, Ohio

Felted Vessel #2
copper & felted alpaca fleece,
3" x 7" x 4.5", 2010





Eric Standley
Blacksburg, Virginia

Either Or Circle 5.1.5
cut paper, 6.5" x 6.5" x 1.75", 2010



Benjamin Stanley
Savannah, Georgia

Far From Home 09
found paper, acrylic & nautical map on
panel, 3" x 3" x 1.5", 2009



Puff

ceramics, 5" x 4" x 7", 2009



Jacquelyn Walther
Richmond, Virginia

Gesture
ceramics, 4" x 4" x 6.5", 2009



Collision No. 1

copper & patina, 6" x 4.25" x 4", 2010



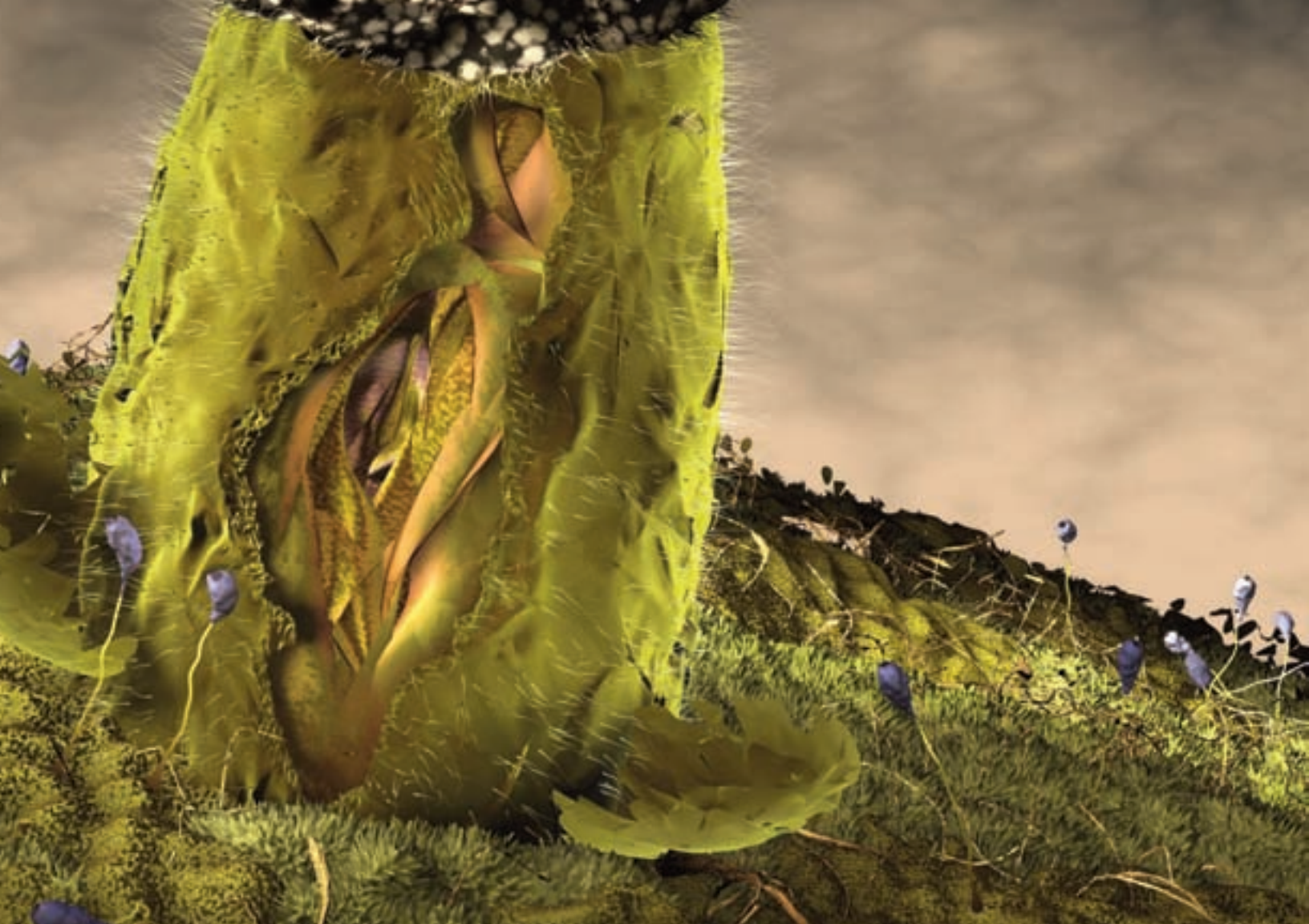
Lisa Wilson
Oxford, Ohio

Collision No. 3
copper & patina, 6" x 4.25" x 1.25", 2010



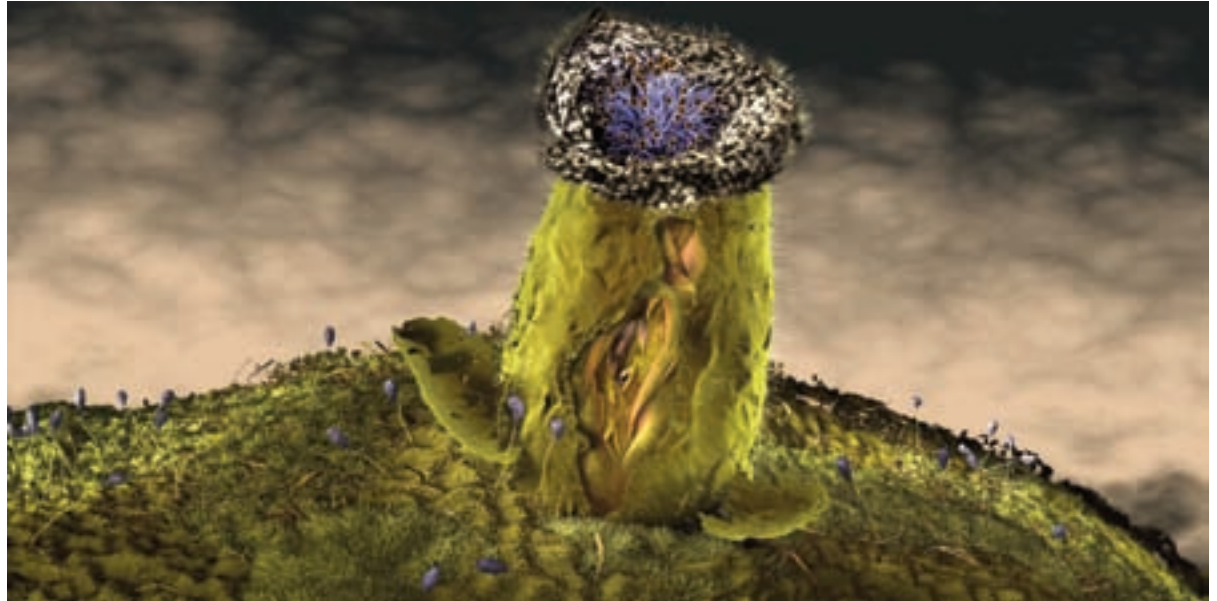
Collision No. 2
copper & patina, 6" x 4.25" x 2", 2010





McCrystle Wood
Cincinnati, Ohio

Epanoi (In Full Bloom)
archival print, 3.5" x 7", 2010



Ritual

oil on panel, 5.75" x 4", 2009



Elizabeth Zanzinger
Seattle, Washington

Transition
oil on panel, 4" x 6.375", 2009



Andrew Zimmermann
Arlington, Virginia

Untitled #2
silver gelatin photograph, 5" x 4", 2002







About Manifest

Founded in May of 2004, Manifest Creative Research Gallery and Drawing Center is a 501(c)(3) non-profit arts organization headquartered in the urban neighborhood of East Walnut Hills in Cincinnati, Ohio. The elegant street level exhibition space is minutes away from downtown Cincinnati, and the numerous academic institutions of higher learning in the region. It is also within easy walking distance of a diversely populated historic neighborhood with residents from all walks of life. The galleries are free and open to the public five hours a day, five days a week, presenting works by students and professionals from around the world. The Manifest Drawing Center Studio is located in the nearby Walnut Hills Essex Studios Complex.

Manifest is supported by grants and public donations and has the goal to support student professionalism, integrate the arts into the urban residential community and raise the bar on artistic standards. The mission also includes the exploration of the relationship between art and design, as well as the ongoing support and display of drawing in all its various forms.

Mission

Manifest stands for the quality presentation, experience, and documentation of the visual arts, engaging students, professionals, and the public from around the world through accessible world-class exhibits, studio programs, and publications.

Manifest Gallery

...a neighborhood gallery for the world.

Manifest Press

...take every exhibit home.

Manifest Drawing Center Studio

...because learning to draw is learning to see.

Executive Director

Jason Franz

Assistant Director

Tim Parsley

Administrative Assistant

Joanna Vance

Gallery Assistant

Laura Fisher

Manifest Associates

Kristin Cullen

Kevin Munte

Trevor Ponder

Interns

Karen Brasier (Senior Intern)

Jase Flannery

Kathleen Harrison

Virginia Hoffman

Maria Lewis

Anna Martinovich (Senior Intern)

Austin Wieland

Bruno Zabaglio

Board of Directors

Christina Dakin

Jason Franz

Debbie Heuer

Tamera Lenz Munte

Brigid O'Kane

Elaine Potter







MANIFEST

CREATIVE RESEARCH GALLERY
AND DRAWING CENTER

2727 woodburn avenue cincinnati, ohio 45206
www.manifestgallery.org